

**WHY? I JUST SHOVELED MY DRIVEWAY OUT,
NOW THE SNOW PLOW HAS PLOWED IT
BACK IN.**

Streets must be plowed from curb to curb to expose the catch basins. Catch basins must be cleared to accept water from melting snow. On most streets, the snow plows are required to make multiple passes to clear all the snow.

When clearing your driveway, pile the snow on the left side (when looking at your house from the road) of your driveway. In many cases this will reduce the amount of snow that the plows push back into your driveway. Also, please do not shovel snow onto the sidewalk or road.

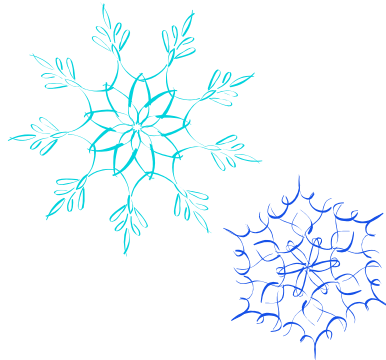
DURING A SNOW STORM, HOW CAN I HELP?

- Remove all vehicles from the street
- Help others, especially seniors and disabled people
- Please keep catch basins clear of snow and ice
- Never push snow onto the street
- Clear the snow from your sidewalks
- Keep fire hydrants clear of snow and other obstructions
- Keep your children safe. Advise children to walk on the left side of the road. Restrict children from playing sports on the streets when the streets are to be plowed.

Do not drive unless you absolutely have to and only if you have good snow tires and a cold weather emergency kit. Use public transit wherever possible.

**We thank all the residents of the
Village of Harrison Hot Springs for
keeping our roads safe.**

Please remember we have a big job to do and we will get to your street. Village staff are out there working on your behalf. Thank you for your patience during snow clearing operations



**Village of Harrison Hot Springs
495 Hot Springs Road
PO Box 160
Harrison Hot Springs, BC V0M 1K0
604-796-2171**

www.harrisonhotsprings.ca



SNOW & ICE REMOVAL GUIDE 2011/12



HELP! THE SNOW HAS NOT BEEN CLEARED FROM MY ROAD! WHAT SHOULD I DO?



The Village of Harrison Hot Springs establishes snow-clearing standards by taking into consideration public safety and budget availability. Snow clearing, sanding and salting are conducted on a priority basis covering:

- FIRST** main roads, emergency and school routes;
- SECOND** secondary roads;
- THIRD** remaining residential areas



From time to time snow will be pushed to the center of wide roads to open priority access. This snow is later removed in priority order.

HOW DOES THE VILLAGE PREPARE FOR A SNOW STORM?

The Village's Public Works department monitors Weather and road conditions 24 hours a day, 7 days a week.

Regular road patrols are conducted to inspect and assess road conditions during inclement weather. Sanding and salting trucks are frequently used during this time to prevent snow or ice from bonding with the road.

If severe weather is forecasted, personnel and equipment are mobilized to provide 24 hour response.

WHO IS RESPONSIBLE FOR CLEARING THE SIDEWALKS?

WE ASK RESIDENTS TO:

Clearing driveways and entrances is the responsibility of the property owner. Property owners/occupants are asked to assist the Village and in consideration of fellow residents for clearing sidewalks adjacent to their properties. It is dangerous to place snow on the roadway. When clearing your driveway, pile the snow on the left side (as you look towards your house) of your driveway. In many cases this will reduce the amount of snow that the plows push back into your driveway.

WE ASK BUSINESSES TO:

Remove snow, ice and rubbish from the sidewalk and footpath bordering on the property not later than ten o'clock in the morning of any day except Sunday or a Statutory Holiday.

After a snowfall or ice storm, snow and ice must be removed from the roof or any other structure where there is potential for ice and snow to fall on any sidewalk or roadway.

Be patient and thoughtful. The Village is out there working on your behalf. A little consideration and common sense can go a long way when weather conditions are difficult.



WHAT ARE THE VILLAGE'S PRIORITIES FOR SNOW REMOVAL?

1. Reducing hazards on major routes during storm conditions and providing assistance to emergency response vehicles.
2. Keeping major transportation routes open. This includes mobility for transit.
3. Extreme hazard zones, business area, civic buildings and lanes that provide the only access to a property.
4. Restoring mobility on residential streets after the storm has passed.
5. Public sidewalks in commercial areas as necessary.
6. Public sidewalks in residential areas as necessary.



PARKING

Parking vehicles impede the ability of the snowplow to clear the street effectively. Please try not to park on the road after a snowfall. The Village may prohibit parking temporarily to assist Snow removal.

SPEED BUMPS

Each year, during the month of November the Village's Public Works Department will remove all speed bumps from Village streets to allow snow removal equipment to clear all streets in the Village.