



VILLAGE OF HARRISON HOT SPRINGS NOTICE OF MEETING AND AGENDA

SPECIAL COUNCIL MEETING

Date: Tuesday, February 4, 2014
Time: 1:00 p.m.
Location: Council Chambers, 495 Hot Springs Road
 Harrison Hot Springs, British Columbia

1. CALL TO ORDER	
Meeting called to order by Mayor Facio	
2. INTRODUCTION OF LATE ITEMS	
3. APPROVAL OF AGENDA	
4. DELEGATIONS	
5. REPORTS FROM STAFF	
<p>Report of Manager of Development and Community Services – January 28, 2014 Re: Miami River Streamkeepers Society Grant Application</p> <p>Recommendation:</p> <p>THAT Council supports the Miami River Streamkeepers Society’s application to Pacific Salmon Foundation for grant funding for Miami River Greenway Restoration Project.</p>	<p>Item 5.1 Page 1</p>
<p>Report of Director of Finance – February 4, 2014 (Verbal) Re: 2014 Budget</p>	<p>Item 5.2 Page 29</p>
6. BYLAWS	
<p>Recommendation:</p> <p>THAT the Miscellaneous Fee Bylaw No. 1049, 2014 be adopted.</p>	<p>Item 6.1 Page 71</p>
7. QUESTION PERIOD	
8. ADJOURNMENT	



VILLAGE OF HARRISON HOT SPRINGS

REPORT TO COUNCIL

TO: Mayor and Council **DATE:** January 28, 2014

FROM: Lisa Grant
 Manager of Development and Community Services

SUBJECT: Miami River Streamkeepers Society Grant Application

ISSUE:

The Miami River Streamkeepers Society is applying for a grant from the Pacific Salmon Foundation and is seeking a letter of support from the Village of Harrison Hot Springs.

BACKGROUND:

The Miami River Streamkeepers Society (the Society) has been working on revitalizing Miami River for several years. In 2013, the Society successfully received and completed works in and around Miami River. This included installation of interpretive signage, riparian area plantings, water monitoring, and an education and information campaign. The Village has provided on-going support for these works through in-kind services.

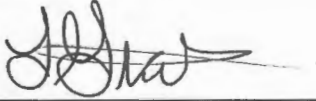
The Society has approached the Village seeking a letter of support for the 2014 application to the Pacific Salmon Foundation Community Salmon Program that will allow the Society to continue their work with a focus on the 200 block of Miami River Drive. The works will include invasive species removal, bank clean up and restoration, riparian area plantings, community outreach and interpretive sign installation. The Village will continue to provide in-kind support for these works including staff time and labour to assist with technical aspects of the restoration and riparian area plantings and sign installation. Attached for information is a copy of the grant application.

A number of local groups, including Sts' ailes First Nations, Fraser Valley Invasive Plant Council, Fraser Valley Watershed Coalition, and Friends of Harrison Forest have provided letters of support for this grant application. The Society is seeking approximately \$8000.00 in grant funding from the Pacific Salmon Foundation.

RECOMMENDATION:

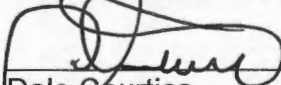
THAT Council supports the Miami River Streamkeepers Society's application to Pacific Salmon Foundation for grant funding for Miami River Greenway Restoration Project.

Respectfully submitted for your consideration;



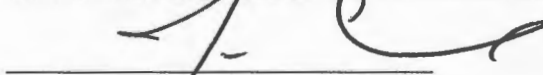
Lisa Grant
Manager of Development and Community Services

DIRECTOR OF FINANCE COMMENTS:



Dale Courtice
Director of Finance

CHIEF ADMINISTRATIVE OFFICER COMMENTS:



Ian Crane
Chief Administrative Officer



PACIFIC SALMON FOUNDATION COMMUNITY SALMON PROGRAM APPLICATION INTRODUCTION

**APPLICATION DEADLINE:
February 15, 2014 Midnight**

Are you a new applicant? Please call Jim Shinkewski, Salmon Programs Coordinator before you begin to complete this application. We will provide assistance and support.

Pacific Salmon Foundation (PSF) is an independent not-for-profit organization that works with the public, which includes: volunteers, community groups, business, industry, academia and all five levels of government (Federal, First Nations, Provincial, Regional and Municipal) to protect, conserve and rehabilitate Pacific salmonids and their habitat.

PSF's Community Salmon Program (CSP) has been issuing grants since 1989. The purpose of the program is to provide resources to enable the public to participate in Fisheries and Oceans Canada's (DFO) Salmon Enhancement Program and in volunteer-based watershed stewardship activities.

This purpose links to and supports PSF's strategic plan and Canada's Policy for Conservation of Wild Pacific Salmon.

Community Salmon Program Intended Outcomes

CSP and your group have common goals; therefore, the portion of your project to receive funds from CSP needs to be aligned with CSP's intended outcomes. These are also the indicators used to assess your application and your completed project:

- Increased and improved salmonid habitat
- Increased community capacity and involvement in salmon enhancement, habitat protection/restoration and watershed stewardship activities
- Increased public awareness and support of the social, environmental and economic value of Pacific salmon
- Increased number of local community cash and in-kind project partners
- Increased public understanding and support for rebuilding the salmon resource and their individual role in supporting wild salmon recovery
- Increased collaboration among community stakeholders in salmon enhancement, habitat conservation and restoration projects, and ultimately
- Increased abundance of healthy, sustainable, genetically diverse Pacific salmon in the wild.

Types of Projects Supported By Community Salmon Program

CSP provides grants, application support and information to volunteer and community-based groups undertaking stewardship capacity-building or salmonid conservation initiatives, meeting CSP criteria and that are supported by Fisheries and Oceans, which work to achieve the above intended outcomes:

- Habitat assessment
- Habitat rehabilitation
- Stock assessment
- Stock enhancement
- Education, outreach and training
- Community stewardship



Pacific Salmon Foundation Community Salmon Program Application for Funding Information

Eligibility Criteria

PSF reserves the right to determine, in its sole discretion, the eligibility of any project, organization or expense. The following criteria must be met for funding, if you are unsure or have questions please contact PSF before you complete this application:

- Project supports the protection, conservation, enhancement or rehabilitation of Pacific salmonids and their habitat
- Project is community-based and carried out in British Columbia or Yukon Territory
- Applicant group is a volunteer based group/organization or not-for-profit both at the time of application and during the grant period
- Applicant group has a demonstrated significant volunteer component to their organization and to the specific project
- Project has involvement and technical support from Fisheries and Oceans Canada's local Community Advisor (CA)
- Applicant group has partnered or leveraged grant request with volunteer time, in-kind, donations or other grants
- CSP will fund up to a maximum of 50% of project costs
- Habitat project funds will be withheld until all permits or letters of support from agencies/ governments or from landowner(s) have been received, where applicable
- Project has letters of support from relevant stewardship groups, businesses or industry – even if not contributing to the project

Exclusions

- Ongoing expenses, ongoing events, fundraisers, operational costs and multi-year projects are not typically considered for funding
- Videos, films, books, newsletters, bulletins that are ongoing or are produced as fundraisers are not considered for funding
- Projects intended for scientific research only, and not to support a specific stewardship project, are not typically funded
- Wages, labour or mandatory employee costs are not considered for funding; however, a portion of technical or professional skills critical to a project when not available from DFO may be considered for funding
- Members or persons directly related to a member of the proponent group that will receive financial benefit from the PSF grant must declare this on the application.

Application Assessment Criteria

- **Feasibility:** The project is scientifically sound and feasible or an acknowledged educational or stewardship activity that benefits salmonids and its habitat
- **Support:** Technical support from DFO Community Advisor, plus where applicable: DFO Habitat Restoration Biologist, Habitat Restoration and Enhancement Team, Science or Fisheries Management Branches and the Province of BC must demonstrate involvement and technical support where applicable, please check with your DFO Community Advisor
- **Volunteerism:** Significant volunteer component with demonstrated engagement of local volunteer stewards.
- **Project Outreach:** Number of project partners, demonstrated support from other watershed groups, local business, academia, landowners, faith organizations, number of in-kind or cash donors or groups involved, level of engagement of broader community beyond group and agency
- **Risk:** Ability of proponent to complete project as described
- **Budget:** Fiscally responsible budget, with request for grant less than 50% of total project costs.

In-Kind

In-kind includes all non-cash resources: volunteer time, equipment, tools, supplies and services that contribute to the planning, implementation, completion and monitoring of the project.



Pacific Salmon Foundation Community Salmon Program
Application for Funding Information

Application Submission

- Include all pertinent project information, including budget, within the CSP application form
Note: attachments are not forwarded to the review committee
• Complete all fields and identify those which are not applicable
• Mail complete application package by closing date and email copy by midnight on the closing date to CSP Program Coordinator as indicated in this application
• All applicants will receive a confirmation email of PSF receipt of application
• Each complete application received by the deadline will be reviewed by a Technical Review Committee and by the Project Selection Committee
• Notification of decision will be mailed to each applicant.

Complete Application Package Check List

- Most recent application form from PSF website used?
Benefits to Pacific salmonids clearly stated?
Volunteer and community hours committed and included in budget?
Ability to complete the project well described?
DFO Community Advisor technical support requested?
Budget is accurate and specific to project?
Project reviewed or supported by experts?
Letters of support from other watershed supporters, habitat projects need landowner letter?
List of directors or board members included?
Other documentation included (photos, maps, permits, etc.)?
Authorized signatures on application?
Did you submit your Final Report for past CSP projects?

Note: The following application has been designed to help you provide the information needed to fairly assess your application against the intended outcomes, eligibility, exclusions and assessment criteria.

Please make it easy for them to say yes by answering all questions.

Please keep a copy of your signed application and retain for your records.

Need Help? Unsure of your eligibility? Please contact:

Jim Shinkewski
Salmon Programs Coordinator
jshinkewski@psf.ca
604 664-7664 ex 112



PACIFIC SALMON FOUNDATION COMMUNITY SALMON PROGRAM

APPLICATION FOR FUNDING

- 1 - THIS APPLICATION FORMS THE BINDING CONTRACT BETWEEN:

PACIFIC SALMON FOUNDATION

300 – 1682 West 7th Avenue
Vancouver BC
V6J 4S6

And

YOUR ORGANIZATION

PROPONENT INFORMATION

Organization Miami River Streamkeepers Society (MRSkS)

Project Title Miami River Greenway (MRG) Restoration Project 2

Contact Janne Perrin, President

Address C/O box 478-327 Miami River Drive, Harrison Hot Springs Bc V0M 1K0

Phone 604 796 9182 **Email:** jjanperrin@shaw.ca **Website:** www.miamiriverstreamkeepers.9k.com

Is your organization a society or registered charity? Yes **Number #** S-0059987

PROJECT INTRODUCTION

PSF Grant Requested \$ 7,719

Total Project Value \$ 26,094

Anticipated Start Date; Summer 2014

Anticipated End Date: Spring 2015

Target Species (Select all)	
Chinook	X
Chum	
Coho	X
Pink	
Sockeye	
Steelhead	
Cutthroat	X

Project Type (Select one only - main project objective)	
Habitat Assessment	
Habitat Rehabilitation	X
Stock Assessment	
Stock Enhancement	
Education & Awareness, Training	
Stewardship/Community Planning	
Project Monitoring or Other (Specify)	

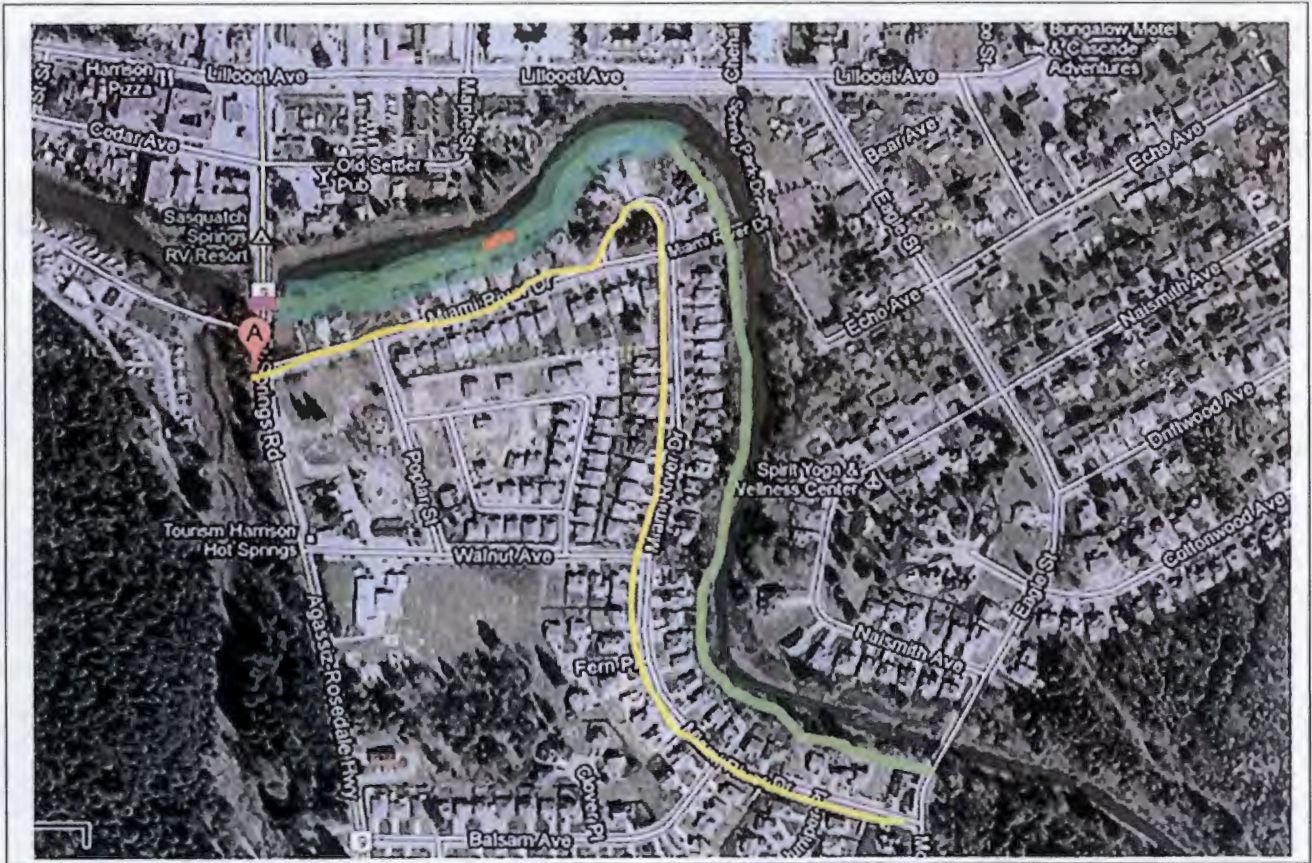
Canada's Policy for Conservation of Wild Pacific Salmon (Project links to the following objectives)	
Safeguard genetic diversity of wild Pacific salmon	
Maintain habitat and ecosystem integrity	X
Manage fisheries for sustainable benefits	







Project Location: Town, Creek and Receiving Waters:
Village of Harrison Hot Springs (VHHS), British Columbia
Creek: Miami (River) **Receiving Waters:** Harrison Lake



Pacific Salmon Foundation Community Salmon Program
 Application for Funding

UTM/GPS coordinates if known: Between 10 U 0588480, 5461411 and 10 U 0588838, 5461245



	Length of clear-cut streamside slated for bioengineering		Entire Greenway along Miami River will benefit from this project
	Skoda Property		Locations where storm drains will be re-sprayed & informational door hangers, informing residents of the value and threats to the watercourse, will be placed
	Approximate location of <i>Phyllostachys</i> Bamboo for removal		
	200-block Miami River Drive (MRD). Focus of invasive plant control		

PROJECT DESCRIPTION

This section is to demonstrate project feasibility and that the project is scientifically sound or an acknowledged educational or stewardship activity that benefits salmonids and its habitat.

Project Summary: What do you plan to do? (Maximum 300 words)

Miami River Greenway (MRG) restoration work begun in 2010 in partnership with the Village of Harrison Hot Springs (VHHS) with a government of Canada Environmental Damages Fund (EDF) grant and continued in 2012 with a Pacific Salmon Foundation Community Salmon Program (PSF/CSP) grant will be the focus of this project to enhance ecosystem integrity of the MRG, a well-used public footpath. Invasive plant removal and riparian plantings to restore ~ 1000 m² of damaged or encroached habitat will be conducted. The planting will be done in Fall 2014. The public, Communities in Bloom (CIB) and local school pupils will be invited to plant. The Fraser Valley Watersheds Coalition (FVWC), Fraser Valley Invasive Plant Council (FVIPC), and the VHHS's Public Works will partner and supervise our project.

MRSkS will contract completion of a three-year Fish Survey. MRSkS will conduct quarterly water quality monitoring. Harrison Elementary School (HES) will participate in Fisheries & Oceans Canada Salmonids in the Classroom.

We will engage in education of the public & streamside homeowners. Specifically, to foster public awareness of the project and the value of the Miami River as a biodiverse, fish bearing creek, the MRSkS will host 4 community events and re-mark storm drains along Miami River Drive. Local daycare children will be asked to participate in drain marking and to distribute informational door hangers to all homes that back the greenway trail. We will give out educational materials at the Canada Day Parade, apply for a booth at the Festival of the Arts Children's Day, have a booth at the Fraser Valley Eagle Festival and host a Great Canadian Shoreline Clean Up.

A minimum of two interpretive signs— to complement two done in 2013 in collaboration with VHHS and CIB- will be installed. We envision the following:

1) Fish of the Miami 2) Healthy Habitat for Salmon 3) Project Overview 2010-2014 4) Greenway Trail Map

Expected results to come from this project:

(Specific, Measurable, Achievable, Realistic and Time Bound)

- Result #1** Replant and enhance an estimated 1,000 square meters of stream-bank along Miami River Greenway.
- Result #2** Install a minimum of 2 interpretive signs along the MRG, share educational materials through at least 4 public events, re-spray storm drains along MRD and distribute informational door hangers to greenway homeowners.
- Result #3** Complete Miami River Fish survey (year 3). Monitor Water Quality quarterly at two sites. HES release enhanced salmon fry into the Miami.

Methods: How do you plan to do your project? Provide a general description of how you will undertake and complete your project. Identify who will do what and how you will complete the project, including methods, personnel, timing. If your project is habitat assessment or mapping, which standard(s) will be used, such as the Streamkeeper methodology? If your project is an education, stewardship or outreach project what group(s) does it target: Preschool, Grade K-12, adult, broader public?

Result #1 Replant and enhance an estimated 1,000 square meters of stream-bank along Miami River Greenway.

Bank erosion issues created by a resident clear-cutting to the waterline in November 2013 will be restored using a bioengineering willow whip technique. The FVWC restoration team will do this work overseen by Natasha Cox, FVWC projects manager. Whips (300 in total) will be acquired from Birch Grove Native Plants, a local Nursery, which supplied excellent native plants (~90% survival rate) for our 2012 PSF/CSP MRG project. This will be a high-density cluster planting of 3-5 willow stakes per beaver basket in this small area of ~250m². Some red osier dogwood and hardhack will be interspersed. It is hoped this will create a dense cover and shade out reed canary and invasives once plants have grown. The clusters will be protected by beaver guard wire held down with long staples. A bed of aquatics- skink cabbage, cattail bulrush bed will be installed along the landward side an existing 7metre long log.



Damaged Stream Bank To Be Restored With High-Density Willow Whip Clusters
(Photo: J Perrin, MRSkS member)



Log Site for Aquatic Plant Bed
(Photo: J Perrin, MRSkS member)

Several damaged (geese/plant removal / off trail walkers / dumping) areas scattered along the greenway will be re-planted. Standard planting procedures will be used with plants being matched with their preferred habitat. In addition homeowner preference for low growing plants – various native ferns, bleeding heart, salal, fringe cup, kinnickinick- that allow a view of the river, will be used on the drier upper stream bank. Sword ferns, snowberry and salmon berry have proved hardy to the public and will be included in the mix. Plants that can be maintained low by MRSkS members or the VHHS staff such as red flowering current, ninebark, Nootka rose will also be included. Homeowners appreciate flowering shrubs. Total area to be restored is approximately 750 square metres.

Cattails and bulrushes will be planted along the shoreline of geese damaged areas to try to prevent them coming ashore. Wet areas protected from the main flow of the river will have aquatics planted. For the entire project ~180 square metres of aquatics will be planted.

The MRSkS will target the 200-block of the MRG for invasive weed control. The FVIPC team will treat the phyllostachys bamboo at 243 MRD & some Japanese knotweed at 215 MRD. Reed canary grass, Himalayan blackberry, Lamiastrium, English ivy and Japanese knotweed shoots still emerging in previously treated areas will be subjected to routine cutting by the MRSkS & CIB members.

Rachel Drennan, outreach coordinator and Natasha Cox, projects manager for the FVWC will manage planting plan and layout. MRSkS Chair, Janne Perrin and Secretary Barb Dramer will coordinate purchase and delivery. Drennan will oversee the plantings with professional guidance from Teresa Baxter, Parks, Trails & Horticulture Technician VHHS, and her crew. Local volunteers from CIB group, MRSk, and the FVWC, will provide labour. Local schools and the public will be invited to participate. The planting will take place in autumn of 2014.

Survival rate of the plants at the prescribed reporting date for this PSF/CSP grant will be a measure of our success. Before and after photos of the restored sites will be another record.

Result #2 Install a minimum of 2 interpretive signs along the MRG, share educational materials through 4 public events, re-spray storm drains along MRD and distribute informational door hangers for greenway homeowners.

Interpretive signs, as previously listed, will be designed in collaboration with the VHHS and Martin Skoda, property owner at 215 MRD. Mr. Skoda is opening an eatery and has an ideal location for public contact. Current interpretive signage in HHS was commissioned & installed by the Village. Both CIB & MRSKS assisted in design of the MRG interpretive signage installed in August 2013. MRSKS will follow VHHS's instruction for this project. Tentative locations are Hot Springs Road adjacent to Skoda's property @ Highway #9 Bridge, footpath at west side Fred Hardy pedestrian bridge, McCombes Road at MRG trail entrance and at the trail entrance off Walnut avenue. Janne Perrin will coordinate for MRSKS.



**One of Two Current Interpretive Signs
Installed August 2013 on the MRG**
(Photo: J. Perrin, MRSKS member)

Storm drains along MRD (see yellow line on map) that were painted in summer 2012 will be resprayed in summer 2014. Donna Cooney, MRSKS Vice President, will oversee this work.



**MRSKS members and riverside homeowner
discussing storm drains Summer 2012**
(Photo: M. Baxter, MRSKS member)

MRSKS members will package door hanger after storm drain marking for the area shown on the map. Fifty-four homes backing the MRG will be targeted. MRSKS brochure, a VHHS brochure "Public Green Spaces," 'Grow Me Instead' from BC Invasive Species Council, DFO's "Are You Killing Fish" & "Water Front Living" and results of year 1 and 2 fish survey will be included.

MRSKS will for the third year take part in Harrison Hot Springs Canada Day Parade and distribute educational brochures to the crowd. We participated in the Festival of the Arts Children's day for three years 2010 to 2012 with live fish from the Miami with Jill Miners and Dr. Mike Pearson, fish biologists, presiding. We have applied for space at the 2014 event.



Canada Parade 2013
(Photo: M. Baxter, MRSKS member)

Since 2010 we have hosted a Great Canadian Shoreline Cleanup in Harrison. In April when the online web site opens for the 2014 cleanup, we will apply for a late September date. We have an informational booth highlighting stewardship of the Miami and will invite WildSafeBC to join us as they have the past 2 years.

Since 2010 we have participated at the Fraser Valley Bald Eagle Festival Exhibitor's Displays. We will again take part in this 2-day event on November 14 & 15, 2014.

Janne Perrin, Chair MRSkS, will coordinate participation in these events. Four to six volunteers from the MRSkS assisted by the local CIB group will participate in each event. At all events information on biodiversity, care of riparian areas, dangers of invasive plants and water quality will be presented. Many of our volunteers are retired educators with early childhood and adult education experience who will seize the teachable moment with the public. Articles will be submitted to the local pre- and post-events.

Result #3 Complete Miami River Fish survey (year 3). Monitor Water Quality quarterly at two sites. HES release enhanced salmon fry into the Miami.

Jill Miners, UBC Master's Candidate, began a study assessing the impacts of land-use on water quality and fish populations and distributions in the Miami River watershed in 2012. In addition, she is also estimating the population size of the endangered Salish sucker and the abundance of other aquatic life in the Miami River watershed.

She has agreed to conduct a 10-day survey for this proposed project She will trap five days in May and 5 days in July and share the results with us. Jill provides all equipment and supplies needed for this study. Results will be published on the MRSkS website and submitted to the local Agassiz-Harrison Observer newspaper. A map of the sampling sites is attached as Appendix A. A summary of her 2011-2013 fish survey can be found at:

http://miamiriverstreamkeepers.9k.com/fish_and_amphibians_of_the_agass.htm



Trapping in the Miami
(Photo: Jill Miners, MRSkS Member)

Water quality monitoring of two sites -10 U 58872, 5461432 (Walnut Foot bridge)& 10 U 58829,1 5461602 (Hot Springs Road Bridge) will be done quarterly by the MRSkS. We will compare the measurements to water quality records begun in September 2010. A third site (10 U 588545 5459622) outside of the project area is also monitored. Results will be posted to our website. MRSkS has all needed equipment.

Melanie Emsley, a Grade Two teacher at Harrison Elementary School will do Salmonids in the Classroom for fry release no later than May 15 2015. Bev Bowler, Education Coordinator for Fisheries and Oceans Canada will supervise. MRSkS is asking PSF to fund a chiller unit and water testing supplies for the school. James Weger will ask DFO for approval of the Miami for enhanced salmon release.

Project Rationale: Why is this needed? Provide a summary of the limiting factors this project will address, why is this project important, how does it align with the intended outcomes of the Community Salmon Program, how will it benefit salmon and its recovery, why is now the right time to do this project?

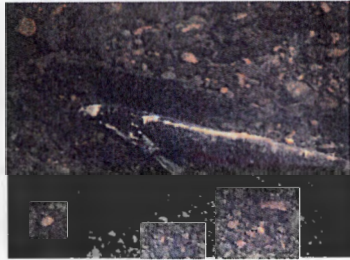
The Sts'ailes Indian Band historically used the Miami River (locally know as "Miami River" but gazetted as "Miami Creek") as a "trail" to Seabird Island and the Fraser in the East of their traditional territory. Elders reported that the Miami was a clear and gravel bottom river in the "old days". The importance of this project is to move back toward those days. The Miami has much potential.

The Miami River Watershed straddles the Kent Municipality and the Village of Harrison Hot Springs landbase. The watershed is 15 square kilometers and flows north into Harrison Lake. The lake opens west into the Harrison River that, with its tributaries, spawns the largest concentration of Chinook

salmon in Canada and the largest run of Chum in British Columbia. The Harrison River also hosts Pink, Coho, Sockeye and Steelhead. The Harrison-Chehalis (Sts'ailes) Flats are designated as a North

American "Salmon Stronghold" The BC Ministry of Lands, Forests and Natural Resource Operations is hoping to establish it as a Wildlife Management Area (WMA), a project begun in the late 1990's.

A fish survey conducted over the past 2 years shows the Miami hosts Coho, Chinook, cutthroat trout and a variety of other fish and amphibians including a healthy population of Salish Sucker, a listed species with a recovery plan. In November 2013 two large, wild male Coho at the mouth of the Miami River were caught and released by fishermen. VHHS Councilor, Zoltan Kiss, reports observing 7 spawning Coho in the Miami under the McCombs Bridge in January 2014. On January 26th a pair of Coho were seen further west in the mid 200-block of the river. That's in our project area!



**Pair of spawning Coho
Eagle & McCombs Bridge
January 2014**

(Photo: Zoltan Kiss, VHHS Councilor)

In the last 50 to 60 years road building, dairy farming and land development have degraded the Miami Creek Watershed. Home building in Harrison Hot Springs in the last twenty years has put increased pressure on the MRG portion of the river. Until November 2010 the greenway trail was not continuous. Completion has attracted an admiring public placing, an escalating burden on the greenway.

There is strong community and partnership support in Harrison Hot Springs to improve the MRG. The VHHS's Official Community Plan endorses it. Martin Skoda, a local businessman, who occupies 215 MRD, a "grand-fathered" property with no 9 metre riparian covenant, approached the MRSkS in 2013 for help with restoration. Subsequently the FVWC, FVIPC and the MRSkS removed invasive Japanese knotweed and replanted native shrubs with compensation \$ and inkind help from all involved. Mr. Skoda, the proprietor, wishes to install an interpretive sign in 2014 at the Hot Springs road boundary of his land to complete the project.

Two previous projects – 2010 EDF "Miami Creek Water Quality Improvement and Environmental Damages Restoration Initiative" and 2012 CSP 12S 037 "Miami River Greenway Restoration"- saw the MRSkS working with many other NGO's to rehabilitate the riparian habitat. Greenway plantings with native shrubs improved the environmental health, biodiversity and ecosystem integrity of the Miami. Increased shade, decreased runoff, enhanced water quality and nutrient production resulted in healthier conditions for the salmonids.

Despite homeowner education over the past three years, the project suffers from encroachment and dumping by a minority of homeowners. This project directly targets restoration of these encroached areas and continues education of homeowners and the public through door hangers and public events. By including students in project activities we hope to inspire our future citizens to good stewardship.

PROJECT FEASIBILITY

Has the Fisheries and Oceans Canada Community Advisor (CA) in your area provided technical input into the development of this project? YES James Weger, CA, Eastern Fraser Valley encouraged us to apply. He advises us that no permits are required for the project.

Your CA must be involved with and technically support your project. Fisheries and Oceans Canada will forward project technical support information directly to PSF prior to the funding round closing. Please contact your CA 4-6 weeks before the funding round closes.

To find out who the ICA is for your project area, please contact DFO Community Involvement at www.pac.dfo-mpo.gc.ca/sep-pmvs/advisors-conseillers-eng.htm



Pacific Salmon Foundation Community Salmon Program Application for Funding

NOTE: DFO Habitat Restoration Biologist, Science or Fisheries Management Branches technical support for your project may ALSO be required, please ask your Community Advisor. If so, please include the name and agency affiliation of your contact.

PROJECT SUPPORT

This section is to demonstrate project support from First Nations, Provincial, or Municipal governments and local business/resident/academia/industry support.

The land is held by covenant to the Village of Harrison Hot Springs (VHHS). It is listed in the VHHS Official Community Plan as a pedestrian greenway.

Habitat projects require landowner's letter of demonstrated support.

Project supporters must be familiar with your group, your project and your project budget.

A permit may be required from the Province or others; please discuss this with your Community Advisor or DFO Habitat Restoration Biologist. If permits are required PSF will need copies to release your grant.

Please list letters of technical support or permits required, attach to application.

8. VHHS
2. FVIPC
3. FVWC

PROJECT VOLUNTEERISM

This section is to demonstrate project volunteerism. Your project requires a significant volunteer component with demonstrated engagement of local volunteer stewards.

Describe volunteer involvement with this project such as: Are you a volunteer based organization? Did volunteers conceive of, plan, fundraise and seek community support for this project? Will volunteers be undertaking the work? Will volunteers be providing project oversight and project reporting? Volunteerism and community support are major application assessment criteria.

The MRSkS has been active for the past 4 years. We arose from the disbanded VHHS MR Committee in 2006. We incorporated as a society in June 2012. Our membership is small (18 members) but active. In the past year we have volunteered over 500 hours of work. One of our 2014 goals is to increase membership. This will be our third MRG rehabilitation project. In 2010 we partnered with VHHS on an EDF grant. In 2012 they partnered with us on a PSF/CSP grant with the CIB committee members giving much assistance. Active NGO partners in both were the FVWC and FVIPC. In both projects the local schools and the public helped with planting. Daycare children worked on storm drain marking in 2012. We will invite all to join us for the 2014-15 proposed undertaking.

MRSkS's Vice President, Donna Cooney, will do accounting for the project. She is a retired banker. Ted Burns, R.P. Bio, MRSkS member has assisted with identifying areas to be restored for this application and suggested suitable plants for the areas targeted. Overall coordination and reporting on the project is by Janne Perrin, MRSkS president.

Please include a list of your Board of Directors.

President: Janne Perrin
Vice President: Donna Cooney
Secretary: Barbara Dramer
Treasurer: Mary Baxter
Director-at-large: Jane Smith



PROJECT OUTREACH

This section is to help increase sustainability of your wild salmon conservation efforts. The long-term success of salmon, your group, Pacific Salmon Foundation's Community Salmon Program, and the Salmonid Enhancement Program is dependent on strong volunteerism and public support to help create changes in societal behaviours and values. This is where you demonstrate that your project is working toward this.

The number of project partners, demonstrated support from other watershed groups, local business, academia, landowners, faith organizations, number of in-kind or cash donors and groups involved, level of engagement of community beyond your group and agency are core indicators of awareness, understanding or support of your project, your group, CSP and or the DFO Salmon Enhancement Program.

Please list letters of community support for this project, attach to application.

1. *Sts'ailes First Nation Rights and Titles Branch*
2. *Communities In Bloom*
3. *Martin Skoda*
4. *Friends of the Harrison Forest*
5. *SD#78 (Fraser Cascade) Harrison Elementary School*

List other public awareness components of this project such as information kiosks, public meetings, presentations, tours, interviews, newspapers, website or brochures that increase public awareness and support for this project and wild salmon conservation.

MRSkS will submit articles to the local Agassiz Harrison Observer pre and post planting day and Great Canadian Shore Line cleanup. Our Kiosk will set up at MRG planting day in November, GCSC in September and at the 2-day Fraser Valley Bald Eagle Festival. One of the MRSkS goals for 2014 is to do a short presentation of our work to VHHS Council in April. Brochures we will distribute include: Water Front Living / Are You Killing Fish/ Home Tips for Healthy Streams (DFO), MRSkS Brochure, MRG & Public Spaces (VHHS), and Grow Me Instead (ISCBC). Two of the interpretive signs we will commission concern wild salmon conservation –Fish of the Miami & Healthy Habitat for Salmon. MRSkS's website is www.miamiriverstreamkeepers.9k.com. Created in January 2013, it highlights all our activities and has links to water quality monitoring, fish surveys our annual report etc.

Communications and public awareness are a mandatory component of CSP. PSF provides:

8.5" X 11"	Project Supported by PSF sign, number requested:	<u> 4 </u>
PSF decal	number requested: (to place on "shared greenway" posts)	<u> 4 </u>

PROJECT RISK

This section is your opportunity to demonstrate ability to complete your project as described. Please provide any other relevant details that will demonstrate this such as list past similar successful projects, contingency plans etc.

MRSkS have a proven track record on MRG restoration projects. In 2012 we received \$3095 from PSF/CSP for greenway restoration and delivered project tasks on time & within budget.

Break the project into discrete tasks and provide an approximate completion date

Task	Completion Date
Submit application to VHHS	January 31 2014
Submit Application to PSF	Feb. 15, 2014 or earlier
Ask James Weger, DFO CA, to seek approval of Miami for enhanced salmon release	January 29, 2014
Storm Drain Marking & Distribution of Information Door Hangers	August 31 2014
Restoration by FVWC team of clear cut stream bank with willow whips and install beaver guards	November 30 2014
Article to Observer re: Public Planting (exact date of planting TBA for November 2014)	Two weeks before planting
Posters Up Public Planting	One week before planting
Public Planting other targeted areas	November 30 2104
Article to Observer re; thank you to planting volunteers	Immediately after planting
Canada Day Parade MRSkS	July 1, 2014
Children's Day booth application	January 15, 2014
Children's Day Booth	July 16, 2014
Great Canadian Shoreline Cleanup on line signup	April 30 2014
Letter to VHHS: Permission for GCSC	May 15, 2014
Article to Observer re; GCSC	Two Weeks before Event
Poster Up GCSC	One Week before event
Great Canadian Shoreline Clean Up	September 27 2014
Article to Observer re; thank you to GCSC volunteers	One Week after event
Remind J. Miners to submit Fish Survey Results Article to Observer	No later than October 15, 2014
Bamboo / Japanese knotweed removal by FVIPC crew	Before December 31 2014
Installation of Interpretive Signs VHHS	November 30 2014
Completion of Year 3 fish Survey Jill Miners	November 30 2014
Fraser Valley Eagle Festival Booth Submission	Early November 2014
Fraser Valley Eagle Festival Participation	November 16, 2014
Release Salmon fry into Miami with HES Grade 2 Children	No later than May 15, 2015
Ongoing maintenance & monitoring of MRG by MRSkS / CIB	September 30 2015



PROJECT BUDGET

This section is to demonstrate you have a fiscally responsible budget, multiple partners and commitment from your group. Please provide a detailed project budget. Note: Ongoing costs, wages, administration and other exclusions listed in the application information are not funded by CSP.

MATERIALS, SUPPLIES and EQUIPMENT purchase or rental, repairs and maintenance, construction, transportation, travel & related costs, capital **NOTE:** Single items, more than \$10,000, require at least three written quotes – you do not have to take the lowest quote; however, you need to explain the added value from the higher quote.

Item	Funder if Not PSF	Unit rate	Units	Amount	
				PSF	Other \$ /in-kind
Interpretive signs	VHHS – installation M. Skoda – one sign	\$535	4	\$1605	\$250 \$535
Native Plants 300 shrubs, 75 trees (for approximate 1000 m2 of riparian habitat) + 300 willow whips		\$4/shrub \$7/tree \$1/willow whips Delivery charge	300 75 300 150	\$1200 \$525 \$300 \$150	0
Aquatic Plants		\$3.75/ Plant	90	\$337.50	
Planting ground staples		\$200/ box	1 box 1000 staples	\$200	
Beaver Guards	MRSkS	\$65/roll	1 roll	0	\$65
Vole Guards	MRSkS	\$414/box	½ box		\$207
Mileage (\$0.5/km)		\$0.5/km	400 km	\$200	0
Shovels, loppers, wheelbarrow & rakes for riparian maintenance (weekly)	MRSkS (from VHHS Grant to Groups 2014)	\$62.50/ 16"lopper \$112/ wheel barrow \$55/ Shovel \$35/ Rake	2 1 2 2	\$110 \$70	\$125 \$112
Chiller Unit for Salmonids Tank		\$1009	1	\$1009	
Water Testing Kits for Salmonids in the classroom (SIC)		PH 3.00 Ammonia 38.50 Nitrite \$13.50 Shipping Charge	1 1 1 \$12.50	\$3.00 38.50 \$13.50 \$12.50	
5-gallon bucket SIC		\$10	1	\$10	
SUBTOTAL				\$5,771.50	\$1294.00



**Pacific Salmon Foundation Community Salmon Program
Application for Funding**

PROFESSIONAL FEES, VOLUNTEER LABOUR, project coordinator, technicians, consultants, labourers

Item	Funder if Not PSF	Unit rate	Units	Amount	
				PSF	Other \$ /in-kind
Volunteer Labour	FVWC (20)\$300 MRSkS (270)\$4050 VHHS (30)\$450 CIB (100)\$1200 HES (100) \$1500	\$15/hr	520 hours	0	\$7800
Volunteer Project Coordination	MRSkS	15/hr	100 hours	0	\$1,500
Volunteer Supervisor	FVWC –restoration crew / public planting VHHS –public planting	\$200/d \$200/d	2 1	0	\$400 \$200
Contractor/Professional fees – Miami River Fish Survey	Jill Miners	\$500/ d	10 days	\$1,000	\$4,000
Restoration Field Crew	FVWC	3-person crew at \$425/d	2 days	\$425	\$425
Invasive Plant Control Crew	FVIPC	\$500/day	1.5 days	\$750	
Volunteer Supervisor		\$100 / day			\$150
Volunteer Supervisor Salmonids in the Classroom	Fisheries & Oceans Canada (DFO)	\$25 / hr	10 hr		\$250
SUBTOTAL				\$2,175	\$14,725



**Pacific Salmon Foundation Community Salmon Program
Application for Funding**

TRAINING, meetings, communications, publishing, printing other costs

Item	Funder if Not PSF	Unit rate	Units	Amount	
				PSF	Other \$ /in-kind
Meetings MRSkS B of D	MRSkS	\$15 / hr	60 hr	0	\$900
Meetings VHHS / MRSkS	VHHS / MRSkS	\$25 / hr \$15 / hr	2 hr each		\$80
Meetings FVWC / MRSkS	FVWC (\$100) / MRSkS (\$60)	\$25 / hr \$15 / hr	4 hr each		\$160
Meetings MRSkS / Skoda	Martin Skoda (\$100) / MRSkS (\$60)	\$25 / hr \$15 / hr	4 hr		\$100 \$60
Web Based Teaching Materials Salmonids in the Classroom	DFO	Primary Set \$100	1		\$100
Printing Hard Copies SIC Teaching Resources ready for Classroom and Teacher use	HES	Primary Set \$50	1		\$50
MRSkS Brochures	MRSkS	100 brochures	1		\$120
Grow Me Instead Booklets	FVIPC	60 booklets	1		\$150
Water Front Living Brochures	DFO	60 brochures	1		\$72
Are You Killing Fish Brochures	DFO	60 brochures	1		\$72
MRG & Public Space Brochure	VHHS	60 brochures	1		\$72
<i>Brochure & website updates, other related communications phone calls, email, letters, public events</i>	MRSkS	\$15 / hr	100hr		\$1500
	Set of ink cartridges for home printer	\$100 / set	1 set	\$100	
	Print paper	\$10/ pkg.	1 pkg.	\$10	
SUBTOTAL				\$110	\$3,436

ADMINISTRATIVE/OVERHEAD COSTS

(Insurance, rent, postage, utilities, accounting services, admin fees etc. should be in-kind as they are not funded)

Item	Funder if Not PSF	Unit rate	Units	Amount	
				PSF	Other \$ /in-kind
Insurance, Membership fee Pacific Streamkeepers Federation, BC Society Fees	MRSkS	\$240 \$15 \$25			\$280
Postage	MRSkS			0	\$40
Accounting	MRSkS	\$25/hr	10	0	\$250
SUBTOTAL				\$0	\$570

TOTAL BUDGET REQUESTED FROM PSF	\$8,056.00
TOTAL OTHER \$/IN-KIND (Leveraging)	\$20,025.00
TOTAL PROJECT COST (PSF & Leveraging)	\$28,081.50

PROJECT BUDGET CONTINUED

Please list all funding or in-kind requested from other sources: confirmed, unconfirmed and declined including your own organization's contributions. This is part of your application assessment and demonstrates that you have thoroughly canvassed your community for cash, donations, discounts or in-kind contributions to offset this project's costs.

Funding Source	Status	Type (In-kind, cash, other)	Amount
MRSkS	Confirmed	In-Kind	\$9,299
FVWC	Confirmed	In-Kind	\$1,225
Fish Survey Contractor – Jill Miners	Confirmed	In-Kind	\$4,000
Martin Skoda	Confirmed	Other – one interpretive sign	\$535
Martin Skoda	Confirmed	In-Kind	\$100
VHHS	Confirmed	In-Kind / other – brochures	\$1022
DFO	Confirmed	Other – brochures	\$494
FVIPC	Confirmed	In-Kind / Other – booklets	\$300
CIB	Confirmed	In-Kind	\$1,500
HES	Pending	In-Kind	\$1550
Total (should agree with or exceed Other and In-kind Project Budget, Page 5)			\$2025

CONTRACTUAL AGREEMENT

Regulation on the Use of PSF Grant Funds and Reporting Procedures

1. The funding of all grant applications is contingent upon PSF funding availability for such purposes
2. The grant recipient is the ultimate spending authority and must authorize all charges against the grant
3. Two applicant organization members with signing authority must sign and date this contract
4. Members or persons directly related to a member of the proponent group that will receive financial benefit from the PSF grant must declare this on the application
5. PSF grant covers project expenses for 12-month period beginning the Effective Date of Grant
6. Reallocation of approved funds is not permitted
7. Any balance remaining of PSF grant funds must be returned to PSF upon submission of Final Report
8. **Final Report with photographs, original receipts, statement of expenditure and a cheque for residual funds are due one year plus 60 days from Effective Date of Grant (date of letter enclosed with grant cheque) or 60 days after the completion of the project, if earlier**
9. A final report is required, if not submitted future applications to PSF will not be considered
10. PSF uses a standard final report form which is available for download on our website: www.psf.ca
11. Acknowledgment of PSF grants on project site signage, in outgoing communications, newspaper articles and at events highlighting your project form part of this contract
12. CSP projects are profiled in PSF's newsletters, website, annual reports and project tours; therefore, you may receive requests for interviews

Disclosure: Conflict, as a recipient of federal funds PSF is required to request all Applicants (your organization) to disclose the involvement in their project of any former federal employees who are under the *Conflict of Interest Act*, the *Conflict of Interest and Post-Employment Code for Public Office Holders*, *Values and Ethics Code for Public Service* and must include this information in the cover letter accompanying your application.

Disclosure: Debts to Canada, as a recipient of Federal funds the PSF is required to request all Applicants (your organization, not as individuals) to declare any amounts owing to Canada under any legislation or other contribution agreements. Please include this information in the cover letter accompanying your application.



**Pacific Salmon Foundation Community Salmon Program
Application for Funding**

PROJECT PHOTOS

This signed agreement grants permission to PSF to reproduce/publish project photos, which form part of your reporting requirements, to promote the Community Salmon Program and salmon conservation.

LIABILITY

Applicants, and the institutions and organizations they represent or by which they are employed, assume complete responsibility for carrying out this project and for the results thereof. PSF does not, by granting of funds, acknowledge the efficiency of the methods adopted in the project or that they are in compliance with applicable law and associating itself within the project by means of financial or other support, PSF does not warrant the validity of the results or that the results will be beneficial.

By accepting a grant of funds, the applicant and the institution or organization release, and agree to indemnify, Pacific Salmon Foundation and its directors and officers from and against any liability, damages, cost and expenses arising from any injury or damage whatever, that may be suffered or incurred by an individual, firm, corporation or agency and which is caused or contributed to, directly or indirectly, by the operations of the applicant, his or her institution or organization or by use and application of the grant funds. Acceptance of the grant indicates an agreement of all the above. PSF shall retain the right to cancel any funding program without cause or recourse.

IT IS HEREBY ACKNOWLEDGED THAT THE FUNDING CRITERIA FORM PART OF THE APPLICATION AND ACCORDINGLY, THE APPLICANT AND AUTHORIZED PERSONNEL (TWO SIGNATURES) BY EXECUTION AND DELIVERY OF THIS APPLICATION AGREE TO BE BOUND BY THE TERMS AND CONDITIONS THEREOF.

_____ Janne Perrin _____
Applicant: Authorized Personnel (please print)

_____ President _____
Title

Applicant: Authorized Personnel (signature)

Date

_____ Donna Cooney _____
Applicant: Authorized Personnel (please print)

_____ Vice-President _____
Title

Applicant: Authorized Personnel (signature)

Date

Email a copy of your application to

jshinkewski@psf.ca

and

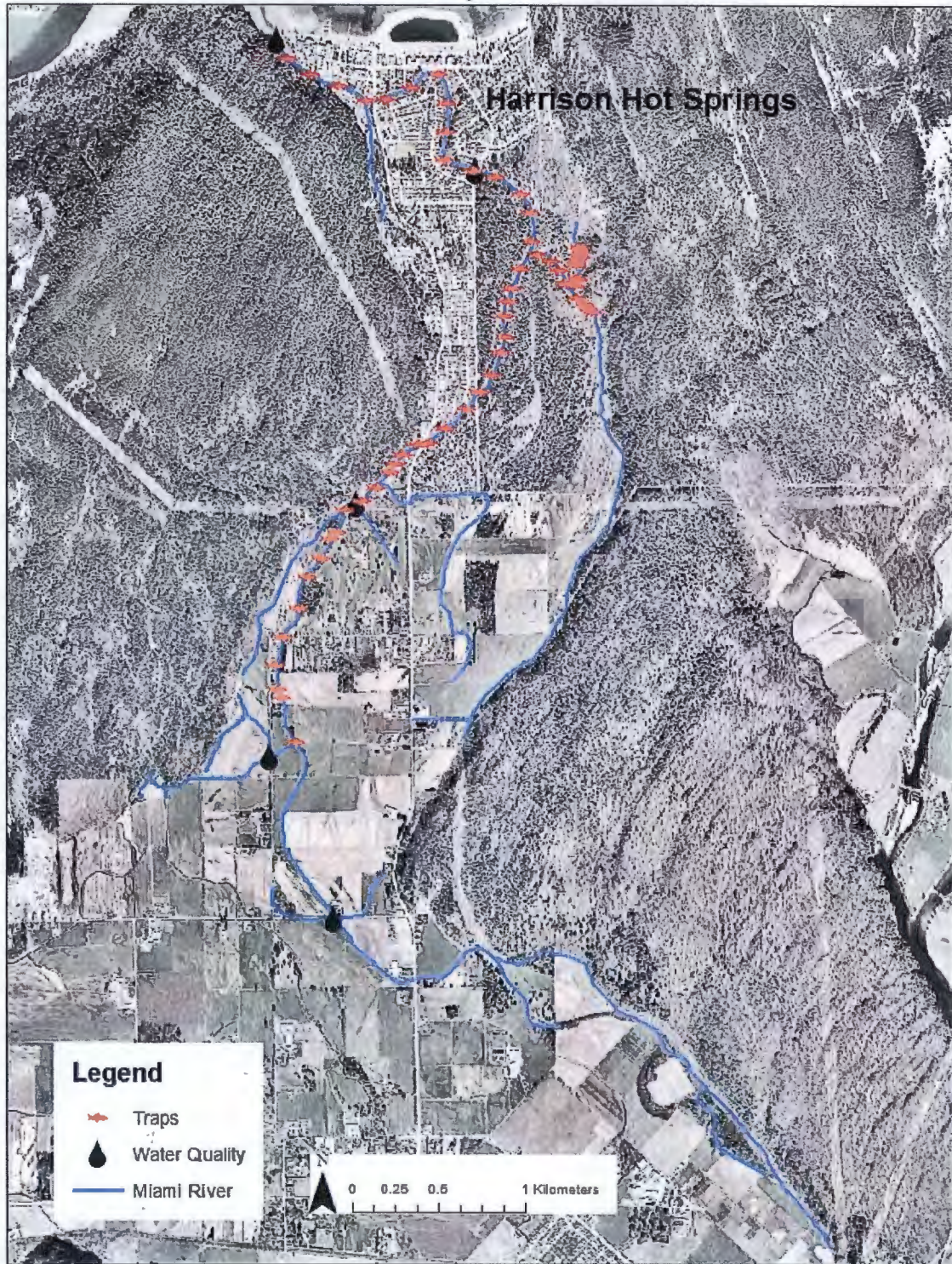
Mail one signed application package with supporting documents to

Pacific Salmon Foundation
300 -1682 West 7th Avenue
Vancouver BC
V6J 4S6

Please keep a complete copy for your records

Appendix A

Miami River Trap Locations 2013





**Pacific Salmon Foundation Community Salmon Program
Application for Funding**

ⁱ A Source Book, Habitat Modification and Canada Geese, (no date), Techniques for Mitigating Human/Goose Conflicts in Urban and Suburban Environments: Prepared by Deborah Doncaster & Jeff Keller: Funded by Animal Alliance of Canada, Animal Protection Institute of the United States. Canada Wildlife Service, Humane Society of the United States (HSUS), International fund for Animal Welfare http://www.animalalliance.ca/wp-content/uploads/2011/07/Goose_Manual-Habitat-Modification.pdf



Sts'ailes

RIGHTS & TITLE

January 27, 2014

Janne Perrin
Chair, Miami River Stream keepers
C/O Box 478
Harrison Hot Springs BC
VOM 1K0

Sts'ailes Support for Pacific Salmon Foundation Grant Application

We are pleased to support the Miami Streamkeepers application for funding through the Pacific Salmon Foundation. Sts'ailes supports this application as it suits the mandate our community has for the enhancement of fish bearing sloughs and waterways in our territory.

We will also encourage some of our community members to offer in-kind support through volunteering for the project.

We wish you luck in your proposal and look forward to working with the Miami Streamkeepers in the future.

If you require further information please contact me as below.

Yours truly,

Boyd Peters (Xoyet Thet)
Aboriginal Rights & Title Manager
4690 Salish Way,
Agassiz, BC VOM 1A1
ph. 604 796 2116 loc. 249
e-mail: Boyd.Peters@stsailles.com

WE ARE THE LAND





#3 – 42312 Yarrow Central Road | Chilliwack, BC | V2R 5E2 | fvipc@shaw.ca | 604-615-9333

January 29, 2014

Jim Shinkewski
Salmon Programs Coordinator
Pacific Salmon Foundation
300 – 1682 West 7th Avenue
Vancouver BC V6J 4S6

Re: Miami Creek Streamkeeper's funding application for the "Miami River Greenway Restoration Project 2"

Dear Mr. Shinkewski,

I am pleased to write this letter on behalf of the Fraser Valley Invasive Plant Council (FVIPC) in support of the Miami River Streamkeeper's funding application for the proposed Miami River Greenway Restoration Project.

Throughout the Fraser Valley, invasive plants are aggressively spreading through our natural and managed lands, impacting public health, fish habitat, water quality, agriculture, forestry, biodiversity, and urban landscapes. More specifically, invasive plants can reduce water quality by contributing to soil erosion, reduce the quality of fish habitat, negatively impact forest regeneration, prevent access to watercourses and other recreational areas, jeopardize culturally and biologically significant plant communities, and permanently alter the landscape. The FVIPC has identified regional priority invasive plant species and infestations and is now actively working towards reducing those populations.

The Miami River Streamkeeper's proposal of removing invasive plants and restoring the riparian area with native vegetation along the Miami Creek in Harrison Hot Springs contributes greatly to other invasive plant management programs in the region. The replacement of invasive species with native vegetation will improve riparian function – native vegetation will bind the soil together, reducing erosion and improving water quality, will provide higher quality habitat for birds, amphibians, and small mammals, and will provide habitat for a more diverse insect population, therefore improving the quality of fish habitat. These are just a few of the benefits. During the project the community will become aware of the negative impacts of invasive plants and will hopefully be inspired to take action to prevent the spread of invasives.

The FVIPC fully supports the project proposed by the Miami River Streamkeepers, and will provide \$300 worth of in-kind support in the form of services (\$150) and outreach materials (\$150). Specifically we will provide logistical support such as making site visits and providing advice at the beginning of and during the project, providing outreach and educational material, contributing to the final report, and in any other way to facilitate the project within our capacity.

Please contact me if you have any questions regarding the FVIPC. I can be reached at fvipc@shaw.ca or 604-615-WEED (9333).

Sincerely,

A handwritten signature in black ink that reads "Jeanne Hughes". The signature is written in a cursive, flowing style.

Jeanne Hughes, R.P. Bio, FVIPC Coordinator



**FRASER VALLEY
WATERSHEDS
COALITION**
Healthy Watersheds, Healthy Communities

FRASER VALLEY WATERSHEDS COALITION
1 -45950 Cheam Ave. Chilliwack BC V2P 1N6
Phone: 604.855.8274
Email: natashia@fvwc.ca
www.fvwc.ca

Jim Shinkewski
Salmon Programs Coordinator
Pacific Salmon Foundation
300-1682 West 7th Ave.
Vancouver BC, V6J 4S6

January 28, 2014

Re: Support for Miami River Stream Keepers Society Application to PSF-CSP 2014.

Dear Mr. Skinkewski,

The Miami River Stream Keepers Society has been actively enhancing the Miami River greenway and engaging with local landowners and the community in Harrison Hot Springs Village to steward and care for this waterway and the fish and wildlife it supports. They have a proven ability to work collaboratively with the village staff, council and community and incorporate cultural and biological conditions into the planning and restoration of the area. The Miami River is home to spawning salmon, offers overwintering habitat and is within the critical habitat range for Salish Sucker.

We fully support their application to continue enhancing the Miami River greenway, focussing on the management of bamboo and knotweed and the replanting and densifying native vegetation within the riparian area, and ensuring water quality and fish surveying is monitored to gain baseline understanding of the aquatic conditions. Their efforts to maintain and enhance this area are encouraged and supported.

We have an established relationship with this organization and trust them to complete the project effectively. We plan to assist them with live staking and bioengineering techniques along the stream bank during their community planting event.

If you have any questions feel free to contact me directly. I hope you consider funding this project.

Yours in Conservation,

Natashia Cox
Project Manager
Fraser Valley Watersheds Coalition
natashia@fvwc.ca
604.855.8274

The Fraser Valley Watersheds Coalition is a charitable organization comprised of individuals, groups, and agencies working together to promote, understand, and restore watersheds in the Fraser Valley.



Friends of Harrison Forest

Box 312
Harrison Hot Springs, B.C.
Canada, V0M 1K0

January 27, 2014

Jim Shinkewski
Salmon Programs Coordinator
Pacific Salmon Foundation
300-1682 West 7th Ave.
Vancouver BC, V6J 4S6

Re: Miami Creek Streamkeeper's Pacific Salmon Foundation Community Salmon Program funding application for the "Miami River Greenway Restoration" Project

Dear Jim Shinkewski

The Friends of Harrison Forest are pleased to once again support the Miami River Streamkeepers's application for the Miami River Greenway Restoration project. We are certain the work of Miami River Streamkeepers is crucial to maintain the health of the river which is under constant threat from invasive species, pesticide applications from nearby residences and erosion. Despite this we note there are spawning salmon and many other aquatic animals in or nearby the river. The habitat improvements provided by the Miami River Streamkeepers is partly responsible for this variety of wildlife. That part of the greenway already in existence provides an excellent walking trail for the community.

The proposed greenway project is important to our group because it will compliment our efforts to raise community awareness on the importance of preserving the Harrison Forest. We fully support the proposed project with the vision that it will not only encourage community awareness and stewardship but also habitat improvement of Miami River.

Sincerely,

Lillian Martin, Chairperson
Friends of Harrison Forest



HARRISON HOT SPRINGS
Naturally Refreshed

File: 0360-20-02

January 31, 2014

Email: jshinkewski@psf.ca

Pacific Salmon Foundation
300 – 1682 West 7th Avenue
Vancouver BC V6J 4S6

Attention: Jim Shinkewski, Salmon Programs Coordinator

Dear Mr. Shinkewski:

Subject: Miami Creek Streamkeeper's funding application for the "Miami River Greenway Restoration" Project #2

The Communities in Bloom Committee are looking forward to providing support to the Miami Creek Streamkeepers for the 2014 Miami River Greenway Restoration project. The river provides important habitat for numerous terrestrial and aquatic species including Coho, Chinook and cutthroat trout.

We are committed to participation at the public native species planting event planned for November 2014, and in regular maintenance of the Miami River Greenway Restoration Project. We anticipate involvement of 6 to 10 volunteers with a total of at least 100 volunteer hours. Our Committee is dedicated to the partnership that it has established with the Miami Creek Streamkeepers.

The project is important to our group because the stewardship of the Miami River Greenway fits the criteria for conservation and preservation, goals set out for CIB groups. Our involvement will help to protect the ecological integrity and biodiversity of the Miami River.

We fully support the proposed project with the vision that it will encourage community awareness, stewardship and habitat improvement of Miami creek for salmonids and other aquatic animals.

Sincerely,

Original signed

Allan Jackson
Chair



cc: Janne Perrin, President, Miami River Streamkeepers Society jjanperrin@shaw.ca

Municipal Office: P.O. Box 160, 495 Hot Springs Road, Harrison Hot Springs, BC V0M 1K0
E info@harrisonhotsprings.ca W www.harrisonhotsprings.ca
T (304) 796 2171 F 604 796 2192

1954





1. The first part of the report deals with the general situation of the country and the progress of the work during the year. It is followed by a detailed account of the work done in each of the various departments. The report then goes on to discuss the results of the work and the progress made in each of the various fields. The final part of the report is a summary of the work done during the year and a statement of the conclusions reached.



Village of Harrison Hot Springs

2014 Financial Plan

Legend

	Bound by Current Policy /Bylaw/ Contract / Agreement
	Insurance – Fixed Amount
	Wage account
	To be determined

**Village of Harrison Hot Springs
Budget
2014**

	<u>General</u>	<u>Sewer</u>	<u>Water</u>	<u>Total</u>
Revenue				
Taxation	\$ 1,875,600	\$ -	\$ -	\$ 1,875,600
Sale of goods and services	5,600	-	-	5,600
Revenue from own sources	193,300	682,000	377,000	1,252,300
Other revenues from own sources	52,800	-	-	52,800
DCC revenues	60,800	95,000	112,000	267,800
Transfers from other governments	1,025,750	158,000	793,000	1,976,750
	<u>3,213,850</u>	<u>935,000</u>	<u>1,282,000</u>	<u>5,430,850</u>
Expenses				
General government and administration	1,095,750	90,200	84,700	1,270,650
Community services	149,800	-	-	149,800
Protective services	181,250	-	-	181,250
Public works	223,700	-	-	223,700
Transportation services	120,150	-	-	120,150
Flood Protection	14,950	-	-	14,950
Sewer system	-	646,900	-	646,900
Water System	-	-	107,600	107,600
Environmental and Public Health	128,800	-	-	128,800
Recreation and culture	305,700	-	-	305,700
Debt financing	850	-	17,000	17,850
Amortization	463,000	133,000	86,000	682,000
	<u>2,683,950</u>	<u>870,100</u>	<u>295,300</u>	<u>3,849,350</u>
Surplus (Deficit) for the year	<u>529,900</u>	<u>64,900</u>	<u>986,700</u>	<u>1,581,500</u>
Reserves, capital and debt				
Capital expenditures	(1,499,500)	(385,000)	(1,209,000)	(3,093,500)
Repayment of debt	(13,400)	-	-	(13,400)
Replacement reserves in excess of amortization	(113,000)	-	-	(113,000)
Appropriation from Surplus	90,000	-	-	90,000
Equity in tangible capital assets	463,000	133,000	86,000	682,000
Reserves used for capital financing	543,000	185,000	292,000	1,020,000
	<u>(529,900)</u>	<u>(67,000)</u>	<u>(831,000)</u>	<u>(1,427,900)</u>
Budget total for the year	<u>\$ 0</u>	<u>-\$ 2,100</u>	<u>\$ 155,700</u>	<u>\$ 153,600</u>

Revenue Summary 2014

Revenue	General	Sewer	Water	Total
Tax Levies				
Real Property Taxes	\$ 1,813,000	\$ -	\$ -	\$ 1,813,000
Penalties and Interest on Taxes	23,000	-	-	23,000
Revenue Taxes	32,100	-	-	32,100
Payment in Lieu of Taxes	7,500	-	-	7,500
	<u>\$ 1,875,600</u>	<u>\$ -</u>	<u>\$ -</u>	<u>\$ 1,875,600</u>
Sale of Goods and Services				
Tax Certificates	\$ 2,000	\$ -	\$ -	\$ 2,000
Other Miscellaneous	3,600	-	-	3,600
	<u>\$ 5,600</u>	<u>\$ -</u>	<u>\$ -</u>	<u>\$ 5,600</u>
Revenue from Own Sources				
Licenses and Permits	\$ 33,800	\$ -	\$ -	\$ 33,800
Fines	2,800	-	-	2,800
Return on Investments	21,700	-	-	21,700
Rental and Lease Income	44,000	-	-	44,000
Curbside Collection Fees	91,000	-	-	91,000
Penalties	-	5,000	3,000	8,000
User Fees	-	475,000	176,000	651,000
Utility Service Fees	-	196,000	191,000	387,000
Connection Fees	-	6,000	7,000	13,000
Disaster Financial Assistance	-	158,000	-	158,000
	<u>\$ 193,300</u>	<u>\$ 840,000</u>	<u>\$ 377,000</u>	<u>\$ 1,410,300</u>
Other Revenues from Own Sources				
Other Miscellaneous Revenue	\$ 52,800	\$ -	\$ -	\$ 52,800
Other Revenues				
DCC Revenues	\$ 60,800	\$ 95,000	\$ 112,000	\$ 267,800
Transfers from Other Governments				
Provincial	\$ 1,025,750	\$ -	\$ 165,000	\$ 1,190,750
Federal	\$ -	\$ -	\$ 628,000	\$ 628,000
Total Revenue	<u>\$ 3,213,850</u>	<u>\$ 935,000</u>	<u>\$ 1,282,000</u>	<u>\$ 5,430,850</u>
Transfers from Reserves and Surplus				
Transfers From Reserves	\$ 543,000	\$ 185,000	\$ 292,000	\$ 1,020,000
Accumulated Surplus	\$ 90,000	\$ -	\$ -	\$ 90,000
Equity in Tangible Capital Assets	\$ 463,000	\$ 133,000	\$ 86,000	\$ 682,000

Revenue Detail 2014

<u>Account Number</u>	<u>Description</u>	<u>Budget</u>
Real Property Taxes		
1-3-1-05-125-2000	Property Taxes - Residential	\$ 1,082,000
1-3-1-05-126-2000	Property Taxes - Business	663,000
1-3-1-05-128-2000	Property Taxes - Non-Profit	68,000
		<u>\$ 1,813,000</u>
Penalties & Interest on Taxes		
1-3-1-06-129-2300	Penalties	\$ 18,000
1-3-1-06-129-2305	Interest on Arrears Taxes	4,000
1-3-1-06-129-2310	Interest on Delinquent Taxes	1,000
		<u>\$ 23,000</u>
Revenue Taxes		
1-3-1-07-100-2025	B.C. Hydro - 1% Revenue	\$ 14,000
1-3-1-07-100-2030	Fortis BC - 1% Revenue	6,900
1-3-1-07-100-2035	Telus - 1% Revenue	2,900
1-3-1-07-100-2040	Shaw Cable - 1% Revenue	8,300
		<u>\$ 32,100</u>
Payment in Lieu of Taxes		
1-3-1-09-100-2105	Canada Post Corp - General & Debt	\$ 3,000
1-3-1-09-100-2110	CBC - General & Debt	1,000
1-3-1-09-100-2115	CMHC - General & Debt	3,500
		<u>\$ 7,500</u>
Tax Certificates		
1-3-1-12-100-2200	Tax Certificates	\$ 2,000
Other Miscellaneous		
1-3-1-12-100-2205	Photocopy Income	\$ 200
1-3-1-12-100-2210	School Tax Admin Fee	3,400
		<u>\$ 3,600</u>
Licenses and Permits		
1-3-1-12-100-2315	Business Licenses	\$ 16,000
1-3-1-12-100-2320	Dog Licenses	1,400
1-3-1-12-100-2325	Building Permits	10,000
1-3-1-12-100-2330	Campfire Permits	200
1-3-1-12-100-2335	Signage Permits	100
1-3-1-12-100-2340	Subdivision Fees	1,500
1-3-1-12-100-2345	Rezoning Application Fees	3,000
1-3-1-12-100-2350	Development/Dev Variance Permits	600
1-3-1-12-100-2355	Other Licenses & Permits	1,000
		<u>\$ 33,800</u>

Transfers from Reserves and Surplus

General Fund

Transfers from Reserves

1-3-1-15-100-2900 Transfers from Reserves \$ 543,000

Accumulated Surplus

1-3-1-15-100-2905 Appropriation from Surplus \$ 90,000

Equity in Tangible Capital Assets

1-3-3-79-900-2915 Equity in Tangible Capital Assets \$ 463,000

Sewer Fund

Transfers from Reserves

2-3-3-41-525-2900 Transfers from Reserves \$ 185,000

Accumulated Surplus

2-3-3-41-525-2905 Appropriation from Surplus \$ -

Equity in Tangible Capital Assets

2-3-3-41-900-2915 Equity in Tangible Capital Assets \$ 133,000

Water Fund

Transfers from Reserves

3-3-3-43-625-2900 Transfers from Reserves \$ 292,000

Accumulated Surplus

3-3-3-43-625-2900 Appropriation from Surplus \$ -

Equity in Tangible Capital Assets

3-3-3-43-900-2915 Equity in Tangible Capital Assets \$ 86,000

Expenditure Summary 2014

Expenditures	General	Sewer	Water	Total
General Government				
Legislative	\$ 126,450	\$ -	\$ -	\$ 126,450
Staff	207,100	-	-	207,100
Management	507,700	-	-	507,700
General Administration	226,800	90,200	84,700	401,700
Municipal Office Building	27,700	-	-	27,700
	<u>\$ 1,095,750</u>	<u>\$ 90,200</u>	<u>\$ 84,700</u>	<u>\$ 1,270,650</u>
Community Services				
Development/Planning	\$ 25,900	\$ -	\$ -	\$ 25,900
Library Board	58,700	-	-	58,700
Tourism & Community Development	52,700	-	-	52,700
Sustainability	12,500	-	-	12,500
	<u>\$ 149,800</u>	<u>\$ -</u>	<u>\$ -</u>	<u>\$ 149,800</u>
Protective Services				
Bylaw Enforcement	\$ 33,500	\$ -	\$ -	\$ 33,500
Fire Protection	139,950	-	-	139,950
Emergency Measures	7,800	-	-	7,800
	<u>\$ 181,250</u>	<u>\$ -</u>	<u>\$ -</u>	<u>\$ 181,250</u>
Public Works				
Common Services	\$ 130,450	\$ -	\$ -	\$ 130,450
Public Works Office, Shop and Yard	35,750	-	-	35,750
Vehicles	57,500	-	-	57,500
	<u>\$ 223,700</u>	<u>\$ -</u>	<u>\$ -</u>	<u>\$ 223,700</u>
Transportation Services				
Roads and Streets	\$ 120,150	\$ -	\$ -	\$ 120,150
Flood Protection Services				
Flood Protection	\$ 14,950	\$ -	\$ -	\$ 14,950
Environmental and Public Health				
Sewage Collection and Treatment	\$ -	\$ 646,900	\$ -	\$ 646,900
Water System Operations & Treatment	-	-	107,600	107,600
Waste Management	122,000	-	-	122,000
Animal Control	6,800	-	-	6,800
	<u>\$ 128,800</u>	<u>\$ 646,900</u>	<u>\$ 107,600</u>	<u>\$ 883,300</u>
Recreation and Culture				
Beach, Lagoon & Promenade	\$ 82,200	\$ -	\$ -	\$ 82,200
Beach Facilities and Docks	67,700	-	-	67,700
Recreation Buildings	49,850	-	-	49,850
Parks, Playgrounds and Greenspaces	105,950	-	-	105,950
	<u>\$ 305,700</u>	<u>\$ -</u>	<u>\$ -</u>	<u>\$ 305,700</u>
Debt Financing	\$ 850	\$ -	\$ 17,000	\$ 17,850
Amortization of Capital Assets	\$ 463,000	\$ 133,000	\$ 86,000	\$ 682,000
Total Expenditures	<u>\$ 2,683,950</u>	<u>\$ 870,100</u>	<u>\$ 295,300</u>	<u>\$ 3,849,350</u>

Fines		
1-3-1-12-101-2360	Bylaw Fines	\$ 2,500
1-3-1-12-101-2365	Animal Control Fines	50
1-3-1-12-101-2370	NSF Cheque Fees	150
1-3-1-12-101-2380	Other Fines	100
		<u>\$ 2,800</u>
Return on Investments		
1-3-1-12-110-2400	Interest - General Operating	\$ 20,000
1-3-1-12-900-2400	Other Interest	200
1-3-1-12-900-2410	Dividends	1,500
		<u>\$ 21,700</u>
Other Miscellaneous Revenue		
1-3-1-13-100-2475	Gifts and Donations	\$ 100
1-3-1-13-100-2490	Tax Sale Revenue	500
1-3-1-13-100-2595	Other Miscellaneous Revenue	52,000
1-3-2-26-325-2375	Fire Alarm Response Fees	200
		<u>\$ 52,800</u>
Transfers from Federal Government		
1-5-1-12-100-2810	Infrastructure Grants	<u>\$ -</u>
Transfer from Provincial Government		
1-3-1-14-130-2710	Small Community Protection Grant	\$ 210,000
1-3-1-14-131-2800	Hwys, Maintenance & Light	750
1-5-1-65-740-2750	Resort Municipality Initiative	515,000
		<u>\$ 725,750</u>
Rental and Lease Income		
1-3-1-16-100-2495	Memorial Benches	\$ 2,000
1-3-1-31-375-2450	Public Works Services Recovery	500
1-3-3-71-745-2435	Special Event Fees	500
1-3-3-72-776-2450	Boat Launch Revenue	20,000
1-3-3-73-800-2420	Rental - Memorial Hall	6,000
1-3-3-73-802-2420	Rental - Yacht Club	15,000
		<u>\$ 44,000</u>
Curbside Collection Fees		
1-3-3-45-630-2300	Curbside Collection Fee Penalties	\$ 1,000
1-3-3-45-630-2454	Curbside Collection Fees	90,000
		<u>\$ 91,000</u>
DCC Revenues		
1-3-3-42-530-2960	Storm Drainage DCC Revenue	\$ 10,800
1-3-3-74-815-2965	Parkland DCC Revenue	-
		<u>\$ 10,800</u>
Gas Tax Revenue		
1-5-1-12-136-2700	Community Works Fund	<u>\$ 300,000</u>

SEWER**Penalties**

2-3-3-41-460-2300 Sewer Fee Penalties \$ 5,000

Sewer Service Utility Fee

2-3-3-41-460-2457 Sewer Service Utility Fee - Residential \$ 176,000

2-3-3-41-460-2462 Sewer Service Utility Fee - Business 20,000

\$ 196,000

Sewer User Fees

2-3-3-41-460-2455 Sewer User Fees \$ 475,000

Sewer Connection Fees

2-3-3-41-460-2465 Sewer Connection Fees \$ 6,000

Other Miscellaneous Revenue

2-3-3-41-515-2595 Disaster Financial Assistance \$ 158,000

Sewer DCC Revenue

2-3-3-41-520-2950 Sewer DCC Revenue \$ 145,000

Provincial Grants

2-3-3-41-610-2800 Infrastructure - Provincial \$ -

Federal Grants

2-3-3-41-610-2810 Infrastructure - Federal \$ -

WATER**Penalties**

3-3-3-43-560-2300 Water Fee Penalties \$ 3,000

Water Service Utility Fees

3-3-3-43-560-2457 Water Service Utility Fee - Residential \$ 170,000

3-3-3-43-560-2462 Water Service Utility Fee - Business 21,000

\$ 191,000

Water User Fees

3-3-3-43-560-2460 Water User Fees \$ 176,000

Water Connection Fees

3-3-3-43-560-2470 Water Connection Fees \$ 7,000

Water DCC Revenue

3-3-3-43-620-2955 Water DCC Revenue \$ 112,000

Provincial Grants

3-5-3-43-610-2800 Infrastructure Grants - Provincial \$ 165,000

Federal Government

3-5-3-43-610-2810 Infrastructure Grants - Federal \$ 628,000

Capital, Debt and Reserve Transfers

Capital Expenditures	<u>\$ 1,499,500</u>	<u>\$ 385,000</u>	<u>\$ 1,209,000</u>	<u>\$ 3,093,500</u>
Debt Repayments - Principal	<u>\$ 13,400</u>	<u>\$ -</u>	<u>\$ -</u>	<u>\$ 13,400</u>
Transfers to Reserves				
Contributions to Non Statutory Reserves	\$ 43,000	\$ -	\$ -	\$ 43,000
Contributions to Statutory Reserves	<u>70,000</u>	<u>-</u>	<u>-</u>	<u>70,000</u>
	<u>\$ 113,000</u>	<u>\$ -</u>	<u>\$ -</u>	<u>\$ 113,000</u>

Expenditure Detail 2014

<u>Account Number</u>	<u>Description</u>	<u>Budget</u>
Legislative		
1-4-1-11-051-3120	Indemnity - Mayor Facio	\$ 30,000
1-4-1-11-051-3405	Mileage - Mayor Facio	1,500
1-4-1-11-051-3410	Meals - Mayor Facio	1,000
1-4-1-11-051-3415	Accommodations - Mayor Facio	2,500
1-4-1-11-051-3420	Commercial Transportation - Mayor Facio	200
1-4-1-11-051-3425	Parking - Mayor Facio	300
1-4-1-11-051-3430	Per Diems - Mayor Facio	1,000
1-4-1-11-051-3515	Cell Phone - Mayor Facio	1,000
1-4-1-11-051-3635	Membership Fees & Registration - Mayor Facio	2,000
1-4-1-11-055-3120	Indemnity - Councillor Kiss	15,000
1-4-1-11-055-3405	Mileage - Councillor Kiss	750
1-4-1-11-055-3410	Meals - Councillor Kiss	750
1-4-1-11-055-3415	Accommodations - Councillor Kiss	1,500
1-4-1-11-055-3420	Commercial Transportation - Councillor Kiss	200
1-4-1-11-055-3425	Parking - Councillor Kiss	200
1-4-1-11-055-3430	Per Diems - Councillor Kiss	500
1-4-1-11-055-3635	Membership Fees & Registration - Councillor Kiss	1,200
1-4-1-11-056-3120	Indemnity - Councillor Reyerse	15,000
1-4-1-11-056-3405	Mileage - Councillor Reyerse	750
1-4-1-11-056-3410	Meals - Councillor Reyerse	750
1-4-1-11-056-3415	Accommodations - Councillor Reyerse	1,500
1-4-1-11-056-3420	Commercial Transportation - Councillor Reyerse	200
1-4-1-11-056-3425	Parking - Councillor Reyerse	200
1-4-1-11-056-3430	Per Diems - Councillor Reyerse	500
1-4-1-11-056-3635	Membership Fees & Registration - Councillor Reyerse	1,200
1-4-1-11-057-3120	Indemnity - Councillor Buckley	15,000
1-4-1-11-057-3405	Mileage - Councillor Buckley	750
1-4-1-11-057-3410	Meals - Councillor Buckley	750
1-4-1-11-057-3415	Accommodations - Councillor Buckley	1,500
1-4-1-11-057-3420	Commercial Transportation - Councillor Buckley	200
1-4-1-11-057-3425	Parking - Councillor Buckley	200
1-4-1-11-057-3430	Per Diems - Councillor Buckley	500
1-4-1-11-057-3635	Membership Fees & Registration - Councillor Buckley	1,200
1-4-1-11-066-3120	Indemnity - Councillor Jackson	15,000
1-4-1-11-066-3405	Mileage - Councillor Jackson	750
1-4-1-11-066-3410	Meals - Councillor Jackson	750
1-4-1-11-066-3415	Accommodations - Councillor Jackson	1,500
1-4-1-11-066-3420	Commercial Transportation - Councillor Jackson	200
1-4-1-11-066-3425	Parking - Councillor Jackson	200
1-4-1-11-066-3430	Per Diems - Councilor Jackson	500
1-4-1-11-066-3635	Membership Fees & Registration - Councillor Jackson	1,200
1-4-1-11-095-3615	Public Relations & Receptions	1,000
1-4-1-11-095-3620	Printing	500
1-4-1-11-095-4115	Insurance for Elected Officials	550
1-4-1-11-095-4530	Catering Services	4,000
1-4-1-11-095-4540	Hospitality Expenses (Council)	500
	Total Legislative	\$ 126,450

Staff

1-4-1-12-115-3105	Staff Wages - Full Time	\$ 178,000
1-4-1-12-115-3110	Staff Wages - Part Time	14,000
1-4-1-12-116-3406	Milcogo Staff	3,000
1-4-1-12-116-3410	Meals - Staff	1,500
1-4-1-12-116-3415	Accommodations - Staff	5,000
1-4-1-12-116-3420	Commercial Transportation - Staff	400
1-4-1-12-116-3425	Parking - Staff	200
1-4-1-12-117-3640	Training & Education	5,000
	Total Staff	\$ 207,100

Management

1-4-1-12-118-3105	Wages - Management	\$ 487,000
1-4-1-12-119-3306	Employee Recruiting Costs	600
1-4-1-12-120-3405	Mileage - Management	3,000
1-4-1-12-120-3410	Meals - Management	2,000
1-4-1-12-120-3415	Accommodations - Management	6,000
1-4-1-12-120-3420	Commercial Transportation - Management	400
1-4-1-12-120-3425	Parking - Management	300
1-4-1-12-120-3640	Education & Training	8,000
1-4-1-12-120-4540	Hospitality Expenses (Mgmt)	500
	Total Management	\$ 507,700

General Administration

1-4-1-14-100-3505	Courier, Freight and Cartage	\$ 200
1-4-1-14-100-3510	Postage	6,500
1-4-1-14-100-3515	Telephone	8,500
1-4-1-14-101-3605	Advertising	8,000
1-4-1-14-101-3610	Promotional Materials	1,000
1-4-1-14-101-3615	Public Relations & Receptions	1,000
1-4-1-14-101-3620	Printing & Binding	1,000
1-4-1-14-101-3625	Photocopying & Supplies	1,500
1-4-1-14-101-3630	Subscriptions & Publications	1,000
1-4-1-14-101-3635	Membership Fees & Registrations	10,000
1-4-1-14-101-3645	Title Searches	200
1-4-1-14-101-3650	Website Maintenance	6,000
1-4-1-14-102-3705	Audit & Accounting Fees	18,000
1-4-1-14-102-3710	Legal Fees	40,000
1-4-1-14-102-3730	Consulting Services	25,000
1-4-1-14-102-3735	Election Expenses	25,000
1-4-1-14-102-3915	Photocopier Lease	11,250
1-4-1-14-103-4110	Insurance Claims	5,000
1-4-1-14-103-4115	Insurance Premiums	18,000
1-4-1-14-103-4120	Tax Sale Costs	600
1-4-1-14-103-4145	Offsite Storage	2,300
1-4-1-14-104-4030	Office Recycling	1,500
1-4-1-14-104-4505	Office Supplies	7,000
1-4-1-14-104-4510	Computer & Supplies	25,000
1-4-1-14-104-4515	Janitorial Supplies	100
1-4-1-14-104-4525	Consumable Supplies	500
1-4-1-14-104-4530	Other Miscellaneous Expenses	300
1-4-1-14-106-5505	Service Charges	750
1-4-1-14-106-5510	Payroll Service Charges	500
1-4-1-14-106-5515	Interest Charges	50
1-4-1-14-106-5530	Interest on Prepaid Taxes	1,000
1-4-1-14-107-5905	Write Off of Tax Balances Under 1\$	50

Total General Administration \$ 226,800

Levies from Other Governments & Agencies**Fraser Valley Library Board**

1-4-1-20-198-4405	Fraser Valley Regional Library	\$ 58,700
-------------------	--------------------------------	-----------

Municipal Office Building

1-4-1-15-180-3105	Wages - Municipal Office Building	\$ 6,500
1-4-1-15-180-3810	Repairs & Maintenance - Building	4,000
1-4-1-15-180-3815	Repairs & Maintenance - Equipment	500
1-4-1-15-180-4020	Janitorial Services	9,600
1-4-1-15-180-4115	Insurance Premiums	1,400
1-4-1-15-180-4710	Landscaping & Gardening Supplies	400
1-4-1-15-180-4740	Hardware & Supplies	200
1-4-1-15-180-4810	Gas	1,200
1-4-1-15-180-4815	Electricity	2,500
1-4-1-15-180-4820	Cable/Internet	1,400
Total Municipal Office Building		\$ 27,700

Development/Planning

1-4-1-60-696-3505	Courier, Freight & Cartage	100
1-4-1-60-696-3605	Advertising	100
1-4-1-60-696-3620	Printing & Binding	100
1-4-1-60-696-3730	Advisory Planning Commission	200
1-4-1-60-696-4010	Planning/Engineering Consultant	25,000
		<u>25,500</u>

Building

1-4-1-60-697-3505	Courier, Freight & Cartage	200
1-4-1-60-697-3620	Printing & Binding	200
		<u>\$ 400</u>
Total Development/Planning		\$ 25,900

Tourism & Community Development

Tourist Information Centre

1-4-1-65-725-3105	Wages - Info Centre	\$	1,200
1-4-1-65-725-3810	Repairs & Maintenance		4,000
1-4-1-65-725-4025	Tourism Society Contribution		31,000
1-4-1-65-725-4115	Insurance Premiums		300
1-4-1-65-725-4710	Landscaping & Gardening Supplies		400
1-4-1-65-725-4740	Hardware & Supplies		100
		\$	<u>37,000</u>

Community Development & Events

1-4-1-65-729-4595	Communities in Bloom	\$	5,000
1-4-1-65-731-4595	Community Development		1,000
1-4-1-65-734-3105	Wages - Special Events		2,200
1-4-1-65-739-5405	Grants to Groups		7,500
			<u>16,700</u>

Total Tourism & Community Development \$ 52,700

Sustainability

1-4-1-67-742-4305	Carbon Offsets	\$	3,000
1-4-1-67-744-3795	Electrical Sustainability Program		9,500

Total Sustainability \$ 12,500

Bylaw Enforcement

1-4-2-24-315-4095	Adjudication Fees	\$	500
1-4-2-24-315-4130	Bylaw Enforcement		32,800
1-4-2-24-315-6695	Collection Agency Fees		200
		Total Bylaw Enforcement	\$ 33,500

Fire Protection**Fire Department Administration**

1-4-2-26-325-3405	Mileage	\$	1,500
1-4-2-26-325-3410	Meals		1,000
1-4-2-26-325-3415	Accommodations		1,000
1-4-2-26-325-3425	Parking		300
1-4-2-26-325-3515	Telephone		1,400
1-4-2-26-325-3605	Advertising		200
1-4-2-26-325-3630	Subscriptions & Publications		200
1-4-2-26-325-3635	Membership Fees & Registrations		400
1-4-2-26-325-3640	Training & Education		18,500
1-4-2-26-325-4505	Office Supplies		400
1-4-2-26-325-4510	Computer Supplies		3,000
1-4-2-26-325-4520	Uniforms		200
1-4-2-26-325-4525	Consumable Supplies		200
			<u>28,300</u>
		\$	28,300

Firehall

1-4-2-26-326-3105	Wages - Fire Hall	\$	2,100
1-4-2-26-326-3810	Repairs & Maintenance - Building		4,000
1-4-2-26-326-4020	Janitorial Services		500
1-4-2-26-326-4105	Radio License		1,000
1-4-2-26-326-4115	Insurance Premiums		2,750
1-4-2-26-326-4515	Janitorial Supplies		300
1-4-2-26-326-4710	Landscaping & Gardening Supplies		300
1-4-2-26-326-4740	Hardware & Supplies		200
1-4-2-26-326-4805	Water		100
1-4-2-26-326-4810	Gas		1,500
1-4-2-26-326-4815	Electricity		1,000
1-4-2-26-326-4820	Cable/Internet		1,100
			<u>14,850</u>
		\$	14,850

Firefighter Remuneration & Benefits

1-4-2-26-327-3125	Firefighter Callouts	\$	7,000
1-4-2-26-327-3745	Outside Fire Services		1,000
1-4-2-26-327-4125	Fire Site Security		600
1-4-2-26-328-3125	Firefighter's Honorariums		6,250
1-4-2-26-329-3125	Firefighter Practices		25,000
1-4-2-26-329-3135	LAFD Inspections/ Fire Prevention		4,000
1-4-2-26-329-3250	Firefighter's WCB		700
1-4-2-26-329-3640	Training Remuneration		15,000
1-4-2-26-329-4115	Insurance Coverage - Firefighters		1,400
1-4-2-26-330-3125	Fire Chief Remuneration		5,000
1-4-2-26-331-3125	Stand-by Remuneration		5,000
			<u>70,950</u>
		\$	70,950

2012 Spartan Fire Truck

1-4-2-26-334-3820	Repairs & Maintenance	\$ 1,000
1-4-2-26-334-4115	Insurance Premiums	1,550
1-4-2-26-334-4605	Gas, Oil, Diesel & Propane	1,200
1-4-2-26-334-4610	Tires	-
		<u>\$ 3,750</u>

1992 Volvo Fire Truck

1-4-2-26-335-3820	Repairs & Maintenance	\$ 3,000
1-4-2-26-335-4115	Insurance Premiums	800
1-4-2-26-335-4605	Gas, Oil, Diesel & Propane	500
1-4-2-26-335-4610	Tires	-
		<u>\$ 4,300</u>

1992 Fire Chief Truck

1-4-2-26-336-3820	Repairs & Maintenance	\$ 500
1-4-2-26-336-4115	Insurance Premiums	650
1-4-2-26-336-4605	Gas, Oil, Diesel & Propane	1,000
1-4-2-26-336-4610	Tires	-
		<u>\$ 2,150</u>

1977 Int'l Fire Truck

1-4-2-26-337-4115	Insurance Premiums	\$ 150
-------------------	--------------------	--------

Fire Department Equipment

1-4-2-26-345-3525	Communications Equipment	\$ 2,500
1-4-2-26-345-3820	Repairs & Maintenance	5,000
1-4-2-26-345-4535	Turnout Gear, Safety Clothing & Equipment	3,200
1-4-2-26-345-4595	Medical Supplies	1,800
1-4-2-26-345-4620	Small Tools & Equipment	2,500
1-4-2-26-345-4695	Fire Hose & Nozzles	500
		<u>\$ 15,500</u>

Total Fire Protection \$ 139,950**Emergency Measures**

1-4-2-28-360-3795	Emergency Services	\$ 7,500
1-4-2-28-360-4530	Catering Services	300

Total Emergency Measures \$ 7,800

Public Works

Public Works Common Services

1-4-3-31-370-3105	Wages - Common Services	71,500
1-4-3-31-370-3405	Mileage	500
1-4-3-31-370-3410	Meals	1,000
1-4-3-31-370-3415	Accommodations	4,000
1-4-3-31-370-3420	Commercial Transportation	200
1-4-3-31-370-3425	Parking	200
1-4-3-31-370-3505	Courier, Freight and Cartage	100
1-4-3-31-370-3630	Subscriptions & Publications	200
1-4-3-31-370-3635	Membership Fees & Registrations	500
1-4-3-31-370-3915	Equipment Rentals	3,000
1-4-3-31-370-4005	Contracted Services	500
1-4-3-31-370-4040	Occupational Health & Safety	12,400
1-4-3-31-370-4105	Licenses & Permits	800
1-4-3-31-370-4505	Office Supplies	1,000
1-4-3-31-370-4510	Computer & Supplies	500
1-4-3-31-370-4525	Consumable Supplies	800
1-4-3-31-370-4535	Safety Clothing & Equipment	5,000
1-4-3-31-370-4740	Hardware & Supplies	5,000
1-4-3-31-370-4810	BC One Call Services	150
1-4-3-31-379-3100	Wages - Training	15,100
1-4-3-31-370-3640	Training & Education	5,000
Total Public Works Common Services		\$ 130,450

Public Works Office

1-4-3-31-371-3515	Telephone	\$ 1,700
1-4-3-31-371-3810	Repairs & Maintenance - Building	21,000
1-4-3-31-371-3815	Repairs & Maintenance - Equipment	200
1-4-3-31-371-4020	Janitorial Services	3,300
1-4-3-31-371-4115	Insurance Premiums	900
1-4-3-31-371-4515	Janitorial Supplies	200
1-4-3-31-371-4805	Water	200
1-4-3-31-371-4810	Gas	1,000
1-4-3-31-371-4815	Electricity	900
		\$ 29,400

Public Works Shop & Yard

1-4-3-31-372-3810	Repairs & Maintenance - Building	\$ 500
1-4-3-31-372-3815	Repairs & Maintenance - Equipment	500
1-4-3-31-372-4110	Insurance Premiums	630
1-4-3-31-372-4810	Gas	700
1-4-3-31-372-4815	Electricity	1,000
1-4-3-31-373-3895	Repairs & Maintenance	3,000
		\$ 6,350
Total Public Works Office, Shop & Yard		\$ 35,750

Equipment & Vehicles

Public Works Equipment

1-4-3-31-375-3815	Repairs & Maintenance	\$	2,000
1-4-3-31-375-4115	Insurance Premiums		500
1-4-3-31-375-4605	Gas, Oil, Diesel & Propane		1,500
1-4-3-31-375-4620	Small Tools & Equipment		5,500
		\$	<u>9,500</u>

2013 Dodge 1500 4 x 4 (001)

1-4-3-31-382-3820	Repairs & Maintenance	\$	500
1-4-3-31-382-4115	Insurance Premiums		1,650
1-4-3-31-382-4605	Gas, Oil, Diesel & Propane		1,800
1-4-3-31-382-4610	Tires		-
		\$	<u>3,950</u>

1998 Ford F350 (Water Tank)

1-4-3-31-383-3820	Repairs & Maintenance	\$	2,000
1-4-3-31-383-4115	Insurance Premiums		900
1-4-3-31-383-4605	Gas, Oil, Diesel & Propane		1,500
1-4-3-31-383-4610	Tires		-
		\$	<u>4,400</u>

2013 Dodge 1500 4 x (002)

1-4-3-31-384-3820	Repairs & Maintenance	\$	500
1-4-3-31-384-4115	Insurance Premiums		1,650
1-4-3-31-384-4605	Gas, Oil, Diesel & Propane		1,800
1-4-3-31-384-4610	Tires		-
		\$	<u>3,950</u>

1993 International Dump Truck

1-4-3-31-385-3820	Repairs & Maintenance	\$	1,500
1-4-3-31-385-4115	Insurance Premiums		1,050
1-4-3-31-385-4605	Gas, Oil, Diesel & Propane		500
1-4-3-31-385-4610	Tires		-
		\$	<u>3,050</u>

1996 Backhoe		
1-4-3-31-386-3820	Repairs & Maintenance	\$ 3,000
1-4-3-31-386-4115	Insurance Premiums	450
1-4-3-31-386-4605	Gas, Oil, Diesel & Propane	2,000
1-4-3-31-386-4610	Tires	-
		<u>\$ 5,450</u>
Utility Trailers		
1-4-3-31-388-3820	Repairs & Maintenance	\$ 200
1-4-3-31-388-4115	Insurance Premiums	800
		<u>\$ 1,000</u>
2009 Kubota		
1-4-3-31-390-3820	Repairs & Maintenance	\$ 800
1-4-3-31-390-4115	Insurance Premiums	200
1-4-3-31-390-4605	Gas, Oil, Diesel & Propane	700
1-4-3-31-390-4610	Tires	-
		<u>\$ 1,700</u>
2003 Ford F550 Dump		
1-4-3-31-391-3820	Repairs & Maintenance	\$ 2,000
1-4-3-31-391-4115	Insurance Premiums	1,050
1-4-3-31-391-4605	Gas, Oil, Diesel & Propane	2,000
1-4-3-31-391-4610	Tires	-
		<u>\$ 5,050</u>
2010 Ford F150 4x4 P/U		
1-4-3-31-392-3820	Repairs & Maintenance	\$ 250
1-4-3-31-392-4115	Insurance Premiums	150
1-4-3-31-392-4605	Gas, Oil, Diesel & Propane	250
1-4-3-31-392-4610	Tires	-
		<u>\$ 650</u>
2010 Ford Van		
1-4-3-31-393-3820	Repairs & Maintenance	\$ 100
1-4-3-31-393-4115	Insurance Premiums	100
1-4-3-31-393-4605	Gas, Oil, Diesel & Propane	100
1-4-3-31-393-4610	Tires	-
		<u>\$ 300</u>
2013 New Holland Tractor		
1-4-3-31-394-3820	Repairs & Maintenance	\$ 400
1-4-3-31-394-4115	Insurance Premiums	200
1-4-3-31-394-4605	Gas, Oil, Diesel & Propane	800
1-4-3-31-394-4610	Tires	-
		<u>\$ 1,400</u>
New JCB Backhoe		
1-4-3-31-395-3820	Repairs & Maintenance	\$ 500
1-4-3-31-395-3925	Lease Payments	15,000
1-4-3-31-395-4115	Insurance Premiums	600
1-4-3-31-395-4605	Gas, Oil, Diesel & Propane	1,000
1-4-3-31-395-4610	Tires	-
		<u>\$ 17,100</u>
Total Vehicles & Equipment		<u>\$ 57,500</u>

Transportation Services**Roads and Streets****Road Resurfacing**

1-4-3-32-415-3105	Wages - Road Resurfacing	\$ 1,000
1-4-3-32-415-3835	Repairs & Maintenance	1,500
1-4-3-32-415-4005	Contracted Services	4,000
		<u>\$ 9,500</u>

Road Marking

1-4-3-32-417-3105	Wages - Road Marking	\$ 10,300
1-4-3-32-417-4005	Contracted Services	-
1-4-3-32-417-4735	Street Signs	1,500
1-4-3-32-417-4740	Hardware & Supplies	1,500
		<u>\$ 13,300</u>

Bridges

1-4-3-32-418-3805	Repairs & Maintenance	\$ 200
1-4-3-32-418-4115	Insurance Premiums	2,250
		<u>\$ 2,450</u>

Drainage & Ditching

1-4-3-32-419-3105	Wages - Draining & Ditching	\$ 12,500
1-4-3-32-419-3895	Repairs & Maintenance	14,000
1-4-3-32-419-4740	Hardware & Supplies	1,000
1-4-3-32-419-4815	Electricity	2,400
		<u>\$ 29,900</u>

Street Lighting

1-4-3-32-421-3835	Repairs & Maintenance	\$ 1,000
1-4-3-32-421-3840	Lamp Standard Replacement Program	15,000
1-4-3-32-421-4115	Insurance Premiums	200
1-4-3-32-421-4815	Electricity	27,000
		<u>\$ 43,200</u>

Street Cleaning

1-4-3-32-423-4005	Street Cleaning	\$ 3,000
-------------------	-----------------	----------

Snow Removal

1-4-3-32-425-3105	Wages - Snow Removal	\$ 7,000
1-4-3-32-425-4720	Sand & Salt	1,000
		<u>\$ 8,000</u>

Village Entrance

1-4-3-32-427-3105	Wages - Village Entrance	5,400
1-4-3-32-427-3835	Repairs & Maintenance	500
1-4-3-32-427-4115	Insurance Premiums	100
1-4-3-32-427-4710	Landscaping & Materials	500
1-4-3-32-427-4815	Electricity	400
		<u>\$ 6,900</u>

Sidewalks

1-4-3-32-429-3105	Wages - Sidewalks	\$ 2,400
1-4-3-32-429-3835	Repairs & Maintenance	1,500
		<u>\$ 3,900</u>

Total Roads and Streets \$ 120,150

Flood Protection

1-4-3-42-535-3105	Wages - Flood Protection	\$ 4,000
1-4-3-42-535-3805	Flood Protection - Repairs & Maintenance	1,500
1-4-3-42-535-3815	Flood Pump Repairs & Maintenance	1,500
1-4-3-42-535-3915	Flood Pump Rentals	5,000
1-4-3-42-535-4115	Flood Protection - Insurance Premiums	2,950
Total Flood Protection		\$ 14,950

Waste Management**Waste Management - Municipal Operations**

1-4-3-45-633-4005	Tipping Fees	\$ 500
1-4-3-45-634-3105	Wages - Solid Waste & Recycling	25,000
Total Waste Management - Municipal Operations		25,500

Waste Management - Contracted Services

1-4-3-46-646-4005	Curbside Collection	\$ 82,000
1-4-3-46-647-4005	Bin & Tipping Fees - Solid Waste	6,500
1-4-3-46-648-4005	Bin & Tipping Fees - Green Waste	8,000
Total Waste Management - Contracted Services		\$ 96,500
Total Waste Management		122,000

Animal Control

1-4-3-50-670-3105	Wages - Animal Waste Stations	\$ 3,600
1-4-3-50-670-3740	Veterinarian Services	200
1-4-3-50-670-4525	Dog Tags & Supplies	3,000
Total Animal Control		\$ 6,800

Recreation & Culture

Beach, Lagoon & Promenade

1-4-3-71-745-3105	Wages - Beach Maintenance	\$ 62,000
1-4-3-71-745-3830	Beach Maintenance	10,000
1-4-3-71-745-4710	Landscaping & Gardening Supplies	1,200
		<u>\$ 73,200</u>

Memorial Benches

1-4-3-71-748-3105	Wages - Memorial Benches	\$ 1,000
1-4-3-71-748-3825	Bench Repairs	100
1-4-3-71-748-4725	Concrete	1,500
1-4-3-71-748-4740	Hardware & Supplies	300
1-4-3-71-748-4795	Bench Purchases	2,000
		<u>\$ 5,500</u>

Lagoon Breakwater

1-4-3-71-757-3805	Breakwater - Repairs & Maintenance	\$ 1,500
1-4-3-71-757-4815	Breakwater - Electricity	2,000
		<u>\$ 3,500</u>
	Total Beach	<u>\$ 82,200</u>

Beach Facilities & Docks

Beach Washrooms

1-4-3-72-775-3105	Wages - Beach Washrooms	\$ 4,200
1-4-3-72-775-3130	Wages - Beach Washrooms Janitorial	16,500
1-4-3-72-775-3810	Repairs & Maintenance	1,500
1-4-3-72-775-4020	Janitorial Services	3,500
1-4-3-72-775-4115	Insurance Premiums	1,000
1-4-3-72-775-4515	Janitorial Supplies	4,000
1-4-3-72-775-4740	Hardware & Supplies	300
1-4-3-72-775-4805	Water	900
1-4-3-72-775-4815	Electricity	4,500
		<u>\$ 36,400</u>

Boat Launch & Washrooms

1-4-3-72-776-3105	Wages - Boat Launch & Washrooms	\$ 2,100
1-4-3-72-776-3130	Wages - Boat Launch Washrooms Janitorial	500
1-4-3-72-776-3810	Repairs & Maintenance	2,500
1-4-3-72-776-4005	Attendant Fees	-
1-4-3-72-776-4115	Insurance Premiums	700
1-4-3-72-776-4515	Janitorial Supplies	-
1-4-3-72-776-4740	Hardware & Supplies	-
1-4-3-72-776-4805	Water	200
1-4-3-72-776-4815	Electricity	400
1-4-3-72-776-5505	Service Charges	-
		<u>\$ 6,400</u>

Harrison Lake Plaza

1-4-3-72-777-3105	Wages - Harrison Lake Plaza	\$ 12,800
1-4-3-72-777-3895	Repairs & Maintenance	3,000
1-4-3-72-777-4115	Insurance Premiums	600
1-4-3-72-777-4710	Landscaping & Gardening Supplies	1,500
1-4-3-72-777-4740	Hardware & Supplies	200
1-4-3-72-777-4805	Water	1,500
1-4-3-72-777-4815	Electricity	4,000
		<u>\$ 23,600</u>

Federal Wharf

1-4-3-72-778-3805	Repairs & Maintenance	\$ -
1-4-3-72-778-4115	Insurance Premiums	-
		<u>\$ -</u>

Float Plane Dock

1-4-3-72-779-3805	Repairs & Maintenance	\$ 1,000
1-4-3-72-779-4115	Insurance Premiums	300
		<u>\$ 1,300</u>

Total Beach Facilities and Docks \$ 67,700**Recreation Buildings****Memorial Hall**

1-4-3-73-800-3105	Wages - Memorial Hall	\$ 10,500
1-4-3-73-800-3130	Wages - Memorial Hall Janitorial	5,800
1-4-3-73-800-3515	Telephone	800
1-4-3-73-800-3810	Repairs & Maintenance	4,500
1-4-3-73-800-4020	Janitorial Services	500
1-4-3-73-800-4115	Insurance Premiums	3,500
1-4-3-73-800-4515	Janitorial Supplies	1,800
1-4-3-73-800-4710	Landscaping & Gardening Supplies	900
1-4-3-73-800-4740	Hardware & Supplies	6,000
1-4-3-73-800-4805	Water	200
1-4-3-73-800-4810	Gas	1,600
1-4-3-73-800-4815	Electricity	4,000
		<u>\$ 40,100</u>

Arts Centre

1-4-3-73-801-3810	Repairs & Maintenance	\$ 4,500
1-4-3-73-801-4115	Insurance Premiums	1,000
		<u>\$ 5,500</u>

Yacht Club

1-4-3-73-802-4115	Insurance Premiums	\$ 250
1-4-3-73-802-4195	Moorage Fees	4,000
		<u>\$ 4,250</u>

Total Recreation Buildings \$ 49,850

Parks, Playgrounds & Green Spaces

Rendall Park

1-4-3-74-815-3105	Wages - Rendall Park	\$ 9,000
1-4-3-74-815-3825	Repairs & Maintenance	500
1-4-3-74-815-3915	Equipment Rentals	2,000
1-4-3-74-815-4115	Insurance Premiums	50
1-4-3-74-815-4710	Landscaping & Gardening Supplies	100
1-4-3-74-815-4740	Hardware & Supplies	200
		<u>\$ 11,850</u>

Spring Park

1-4-3-74-816-3105	Wages - Spring Park	\$ 14,000
1-4-3-74-816-3825	Repairs & Maintenance	5,000
1-4-3-74-816-4115	Insurance Premiums	400
1-4-3-74-816-4710	Landscaping & Gardening Supplies	300
1-4-3-74-816-4740	Hardware & Supplies	200
1-4-3-74-816-4815	Electricity	600
		<u>\$ 20,500</u>

Beach Playground

1-4-3-74-817-3105	Wages - Beach Playground	\$ 2,200
1-4-3-74-817-3825	Repairs & Maintenance	300
1-4-3-74-817-4115	Insurance Premiums	200
1-4-3-74-817-4740	Hardware & Supplies	200
		<u>\$ 2,900</u>

Other Green Spaces

1-4-3-74-818-3105	Wages - Other Green Spaces	\$ 65,000
1-4-3-74-818-3825	Repairs & Maintenance	500
1-4-3-74-818-4005	Urban Forest	13,500
1-4-3-74-818-4710	Landscaping & Gardening Supplies	1,500
1-4-3-74-818-4740	Hardware & Supplies	200
		<u>\$ 70,700</u>

Total Parks, Playgrounds & Green Spaces \$ 105,950

Debt Financing

Interest

1-6-1-12-290-5605	Capital Lease - Interest	<u>\$ 850</u>
-------------------	--------------------------	---------------

Amortization of Capital Assets

1-4-1-12-170-0750	Amortization - Vehicles	\$ 32,500
1-4-1-12-170-0700	Amortization - Office Equipment, IT & Furnishings	20,000
1-4-1-12-170-0650	Amortization - Buildings & Structures	34,500
1-4-2-26-170-0700	Amortization - Fire Department Equipment	5,500
1-4-3-31-170-0700	Amortization - Public Works Equipment	32,000
1-4-3-32-170-0550	Amortization - Roads	197,000
1-4-3-32-170-0600	Amortization - Bridges	48,000
1-4-3-42-170-0900	Amortization - Linear Storm Sewer	18,000
1-4-3-74-170-0800	Amortization - Parks Infrastructure	7,000
1-4-3-79-170-0850	Amortization - Other Infrastructure	68,500
Total Amortization of Capital Assets		\$ 463,000

Environmental & Public Health

Sewer System

Wastewater Administration

2-4-3-41-460-3105	Wages - Wastewater Administration	\$ 57,000
2-4-3-41-460-3405	Mileage	500
2-4-3-41-460-3410	Meals	800
2-4-3-41-460-3415	Accomodations	1,500
2-4-3-41-460-3420	Commercial Transportation	-
2-4-3-41-460-3425	Parking	200
2-4-3-41-460-3515	Telephone	800
2-4-3-41-460-3705	Audit Fees	1,500
2-4-3-41-460-4115	Insurance Premiums	1,900
2-4-3-41-460-4505	Office Overhead/Buildings	10,000
2-4-3-41-460-4695	Vehicle Expense Allocation - Wastewater	4,500
2-4-3-41-469-3105	Wages - Training	4,500
2-4-3-41-469-3640	Training & Education	7,000
Total Wastewater Administration		90,200

Wastewater Collection and Treatment

Wastewater Collection

2-4-3-41-461-3105	Wages - Wastewater Collection	\$ 4,000
2-4-3-41-461-3805	Wastewater Collection - Repairs & Maintenance	60,000
2-4-3-41-461-4005	Wastewater Connection Expenses	15,000
2-4-3-41-461-4740	Wastewater Collection Supplies	2,000
		\$ 81,000

Wastewater Treatment Plant

2-4-3-41-465-3105	Wages - Wastewater Treatment Plant	\$ 95,000
2-4-3-41-465-3515	Telephone Alarm	4,200
2-4-3-41-465-3795	Wastewater Sampling	7,000
2-4-3-41-465-3810	Repairs & Maintenance	30,000
2-4-3-41-465-3835	WWTP Access Road Restoration	198,000
2-4-3-41-465-4005	Contracted Services - Sludge Removal	15,000
2-4-3-41-465-4095	Monitoring & Technical Support	7,000
2-4-3-41-465-4105	Permits	1,600
2-4-3-41-465-4115	Insurance Premiums	7,000
2-4-3-41-465-4505	Office Supplies	500
2-4-3-41-465-4510	Computer & Supplies	1,500
2-4-3-41-465-4535	Safety Clothing & Equipment	1,000
2-4-3-41-465-4545	Laboratory Expenses	10,000
2-4-3-41-465-4605	Gas, Oil, Diesel & Propane	500
2-4-3-41-465-4620	Small Tools & Equipment	5,000
2-4-3-41-465-4705	Chemicals	100,000
2-4-3-41-465-4740	Hardware & Supplies	1,500
2-4-3-41-465-4815	Electricity	40,000
		\$ 524,800

Lift Stations

2-4-3-41-466-3105	Wages - Lift Stations	\$ 18,000
2-4-3-41-466-3810	Repairs & Maintenance	12,000
2-4-3-41-466-4115	Insurance Premiums	2,900
2-4-3-41-466-4740	Hardware & Supplies	200
2-4-3-41-466-4815	Electricity	8,000
		\$ 41,100

Total Wastewater Collection and Treatment \$ 646,900

Debt Financing

Interest

2-6-3-41-471-5705	Debenture Interest - Bylaw No. 626	\$ -
-------------------	------------------------------------	------

Amortization of Capital Assets

2-4-3-41-170-0650	Amortization - Wastewater Structures	\$ 109,500
2-4-3-41-170-0700	Amortization - Wastewater Equipment	6,500
2-4-3-41-170-0900	Amortization - Wastewater Linear Assets	17,000
Total Amortization of Capital Assets		\$ 133,000

Water System**Water Administration**

3-4-3-43-560-3105	Wages - Water Administration	\$ 57,000
3-4-3-43-560-3405	Miloage	500
3-4-3-43-560-3410	Meals	800
3-4-3-43-560-3415	Accomodations	1,500
3-4-3-43-560-3420	Commercial Transportation	-
3-4-3-43-560-3425	Parking	200
3-4-3-43-560-3515	Telephone	800
3-4-3-43-560-3705	Audit Fees	1,500
3-4-3-43-560-4115	Insurance Premiums	1,900
3-4-3-43-560-4505	Office Overhead/Buildings	10,000
3-4-3-43-560-4695	Vehicle Expense Allocation - Water	4,500
3-4-3-43-569-3105	Wages - Training	3,000
3-4-3-43-569-3640	Training & Education	3,000
	Total Water Administration	\$ 84,700

Water Supply & Distribution

3-4-3-43-561-3105	Wages - Water Supply & Distribution	\$ 28,000
3-4-3-43-561-3795	Water Sampling	2,600
3-4-3-43-561-3805	Water Connection Expenses	5,000
3-4-3-43-561-3810	Water Supply & Distribution - R & M	7,000
3-4-3-43-561-4105	Licenses & Permits	600
3-4-3-43-561-4620	Small Tools & Equipment	1,500
3-4-3-43-561-4740	Water Distribution Supplies	2,000
		<u>\$ 46,600</u>

Water Reservoir

3-4-3-43-562-3105	Wages - Water Reservoir	\$ 1,000
3-4-3-43-562-3805	Repairs & Maintenance	1,000
3-4-3-43-562-4115	Insurance Premiums	2,700
3-4-3-43-562-4740	Hardware & Supplies	300
3-4-3-43-562-4815	Electricity	600
		<u>\$ 5,600</u>

Water Treatment Plant

3-4-3-43-563-3105	Wages - Water Treatment	\$ 34,000
3-4-3-43-563-3515	Telephone Alarm	-
3-4-3-43-563-3795	Water Sampling	-
3-4-3-43-563-3810	Repairs & Maintenance	-
3-4-3-43-563-4005	Contracted Services	-
3-4-3-43-563-4095	Monitoring & Technical Support	-
3-4-3-43-563-4105	Permits	-
3-4-3-43-563-4115	Insurance Premiums	-
3-4-3-43-563-4535	Safety Clothing & Equipment	-
3-4-3-43-563-4620	Small Tools & Equipment	-
3-4-3-43-563-4705	Chemicals	-
3-4-3-43-563-4740	Hardware & Supplies	-
3-4-3-43-563-4815	Electricity	-
		<u>\$ 34,000</u>

Pumping Stations

3-4-3-43-564-3105	Wages - Pumping Stations	\$ 1,000
3-4-3-43-564-3515	Telephone Alarm	1,300
3-4-3-43-564-3805	Repairs & Maintenance	1,000
3-4-3-43-564-4115	Insurance Premiums	900
3-4-3-43-564-4705	Chemicals	3,500
3-4-3-43-564-4740	Hardware & Supplies	200
3-4-3-43-564-4815	Electricity	9,000
		<u>\$ 16,900</u>

Hydrants

3-4-3-43-566-3105	Wages - Hydrants	\$ 3,000
3-4-3-43-566-3805	Repairs & Maintenance	1,500
		<u>\$ 4,500</u>

Total Water System Operations & Treatment \$ 107,600**Debt Financing****Interest**

3-6-3-43-570-5705	Debenture Interest - Bylaw No	\$ -
3-6-3-43-571-5705	Interim Financing Interest - Bylaw 885	17,000
	Total Interest	<u>\$ 17,000</u>

Amortization of Capital Assets

3-4-3-43-170-0650	Amortization - Water Structures	\$ 49,000
3-4-3-43-170-0700	Amortization - Water Equipment	500
3-4-3-43-170-0900	Amortization - Water Linear Assets	36,500
	Total Amortization of Capital Assets	<u>\$ 86,000</u>

**Capital, Debt and Reserve
Transfers**

General Fund

Capital Expenditures

1-6-1-14-191-6015	Office Equipment & Furniture	\$	10,000
1-6-2-26-345-6015	Fire Department Equipment		5,000
1-6-2-26-356-6025	New Fire Department Vehicle		40,000
1-6-3-31-370-6025	Public Works Vehicles		-
1-6-3-31-375-6015	Public Works Equipment		66,000
1-6-3-32-446-6030	Block 1 Esplanade		300,000
1-6-3-32-447-6030	Block 2 Esplanade		-
1-6-3-42-530-6040	Storm Drainage DCC Projects		13,500
1-6-3-60-714-3715	DCC Master Plan		50,000
1-6-3-65-740-6095	RMI Projects		515,000
1-6-3-72-775-6010	Beach Washrooms Upgrade		500,000
1-6-3-74-815-6040	Parkland DCC Projects		-
	Total Capital Expenditures	\$	1,499,500

Sewer Fund

Capital Expenditures

2-6-3-41-460-6040	Sewer DCC Projects	\$	-
2-6-3-41-480-6095	Sewer Capital Project - WWTP Outfall		100,000
2-6-3-41-487-6095	Sewer Planning		25,000
2-6-3-41-488-6015	Sewer Equipment - Generator		160,000
2-6-3-41-490-6005	Siphon Replacement		100,000
	Total Capital Expenditures	\$	385,000

Water Fund

Capital Expenditures

3-6-3-43-560-6040	Water DCC Projects	\$	118,000
3-6-3-43-580-6095	Water Capital Project - Water Treatment		1,030,000
3-6-3-43-580-6095	Water Capital Project - Sampling Stations		6,000
3-6-3-43-583-6095	Water Planning		55,000
3-6-3-43-584-6015	Water Equipment		-
	Total Capital Expenditures	\$	1,209,000

Debt

General Fund

Principal

1-6-1-13-290-5610 Capital Lease \$ 13,400

Water Fund

Principal

3-6-3-43-572-5710 Debenture Principal - Bylaw No. \$ -

Transfers to Reserves

General Fund

Non Statutory Reserves

1-4-1-13-250-5305	Assessment Reserve - Contribution	\$ 25,000
1-4-1-13-251-5305	Building Reserve - Contribution	-
1-4-1-13-256-5305	Office Equipment Reserve - Contribution	-
1-4-1-13-258-5305	Sick Leave/Retirement Reserve - Contribution	18,000
1-4-1-13-450-5305	Road/Sidewalk Reserve - Contribution	-
1-4-1-13-621-5305	Flood Box/Drainage Reserve - Contribution	-
1-4-1-13-740-5305	Resort Municipality Initiative - Contribution	-
1-4-1-13-770-5305	Beach Reserve - Contribution	-
1-4-1-13-795-5305	Dock Replacement Reserve - Contribution	-
	Total Non Statutory Reserves	\$ <u>43,000</u>

Statutory Reserves

1-4-1-14-252-5315	Community Amenities Reserve - Contribution	\$ 20,000
1-4-1-14-259-5315	Parkland Reserve - Contribution	25,000
1-4-1-14-355-5315	Fire Dept Equipment Reserve - Contribution	25,000
1-4-1-14-401-5315	General Capital Works Reserve - Contribution	-
	Total Statutory Reserves	\$ <u>70,000</u>

Sewer Fund

Transfers to Reserves

2-6-3-41-515-5310	Sewer Reserve Contribution	\$ -
2-6-3-41-516-5310	Sewage Treatment Replacement Reserve Contribution	-
		\$ <u>-</u>

Water Fund

Transfers to Reserves

3-6-3-43-615-5310	Water Reserve Contribution	\$ <u>-</u>
-------------------	----------------------------	-------------

Assessment Information

2014 vs. 2013

Class	Description	2014	2013	Change
1	Residential	\$305,207,872	\$307,129,795	(.62 %)
6	Business	\$57,547,470	\$63,562,477	(9.46) %
8	Rec/Non Profit	\$4,234,300	\$2,591,700	63.34 %



09

Average Assessments

Single Family Residence

Average assessment in 2014 is \$ 316,500, a decrease of \$2,000 from 2013

2014 - Average Taxes

Single Family Residence

Description	Preliminary 2014 Rate	January 2014 Average Assessment	Preliminary 2014 Taxes
Municipal	3.54397	\$316,500	\$1,121.67
School	2.80620	316,500	888.17
Reg. District	.23629	316,500	74.79
Reg. Hospital	.23381	316,500	74.00
BC Assessment	.06100	316,500	19.31
MFA	.00020	316,500	.07
Police	.24970	316,500	79.03
		Total	\$2,257.04

Total Taxes Payable Comparison - SFD

Description	2014 Taxes	2013 Taxes
Municipal *	\$1,121.67	\$1,098.51
School **	888.17	893.78
Regional District **	74.79	75.26
Regional Hospital **	74.00	74.47
BC Assessment **	19.31	19.43
Mun. Fin. Authority **	.07	.07
Police **	79.03	79.53
Total	\$2,257.04	\$2,241.05

* Using preliminary 2014 tax rate ** - Using 2013 Final Rates



Average Municipal Taxes – 2014

Single Family Residence

- Using a preliminary tax rate of 3.54397 and the preliminary average Single Family Residence assessment of \$316,500, total municipal taxes would increase **\$23.16** this year.



64

Average Assessments

Strata Unit

Average assessment in 2014 is \$ 253,000, a decrease of \$12,800 from 2013

2014 - Average Taxes

Strata Unit

Description	2014 Rate	2014 Average Assessment	2014 Taxes
Municipal	3.54397	\$253,000	\$896.63
School	2.80620	253,000	709.97
Reg. District	.23629	253,000	59.79
Reg. Hospital	.23381	253,000	59.16
BC Assessment	.06100	253,000	15.44
MFA	.00020	253,000	.05
Police	.24970	253,000	63.18
Total			\$1.804.22

Total Taxes Payable Comparison – Strata Unit

Description	2014 Taxes	2013 Taxes
Municipal *	\$896.63	\$916.75
School **	709.97	720.99
Regional District **	59.79	62.81
Regional Hospital **	59.16	62.15
BC Assessment **	15.44	16.22
Mun. Fin. Authority **	.05	.06
Police **	63.18	66.37
Total	\$1,804.22	\$1,845.35

* Using preliminary 2014 tax rate ** - Using 2013 Final Rates



Average Municipal Taxes – 2014

Strata Unit

- Using a preliminary tax rate of 3.54397 and the preliminary average Strata Unit assessment of \$253,000, total municipal taxes would **decrease \$20.12** this year

89

2014 Property Tax Revenue

Preliminary

GENERAL MUNICIPAL

Class	2014 Assessment	Tax Rate (Prelim)	\$	2014 Ratio	2013 %
Res (1)	305,207,872	3.54397	1,081,648	1:1	59.7
Bus (6)	57,547,470	11.51789	662,825	1:3.25	36.6
Rec (8)	4,234,300	15.94785	67,527	1:4.5	3.7
Total	366,989,642		1,812,000		100.0

2014 Property Tax Revenue

Preliminary

GENERAL MUNICIPAL

Class	2014 Assessment	Tax Rate (Prelim)	\$	2014 Ratio	2013 %
Res (1)	305,207,872	3.44697	1,052,044	1:1	58.1
Bus (6)	57,547,470	12.06441	694,276	1:3.50	38.3
Rec (8)	4,234,300	15.51139	65,680	1:4.5	3.6
Total	366,989,642		1,812,000		100.0

Residential to Business – 1:3.50 Rec unchanged at 4.50

2014 Property Tax Revenue

Preliminary

GENERAL MUNICIPAL

Class	2014 Assessment	Tax Rate (Prelim)	\$	2014 Ratio	2013 %
Res (1)	305,207,872	3.47497	1,060,587	1:1	58.5
Bus (6)	57,547,470	12.16238	699,914	1:3.50	38.6
Rec (8)	4,234,300	12.16238	51,499	1:3.5	2.9
Total	366,989,642		1,812,000		100.0

Residential to Business - 1:3.50 Rec 1:3.50



VILLAGE OF HARRISON HOT SPRINGS

BYLAW NO. 1049

WHEREAS the Village of Harrison Hot Springs has deemed it advisable to establish miscellaneous fees in respect of all or part of a service of the municipality and the use of municipal property;

NOW THEREFORE in open meeting assembled, the Mayor and Council of the Village of Harrison Hot Springs enacts as follows:

1. CITATION

This Bylaw may be cited for all purposes as the "Village of Harrison Hot Springs Miscellaneous Fee Bylaw No. 1049, 2014".

2. FEES

That the following schedules, which outline the fees and charges for services within the Village of Harrison Hot Springs, are attached hereto and form part of this bylaw;

- Schedule A - Development Applications, Permits and Fees
- Schedule B - Public Works Service and Fees
- Schedule C - Office Administration and Miscellaneous Fees
- Schedule D - Public Property or Facility for Events, Functions or Activities

3. SEVERABILITY

If any section, subsection, sentence, clause or phrase of this bylaw is, for any reason, held to be invalid by the decision of any court of competent jurisdiction, the invalid portion shall be severed and the decision that it is invalid shall not affect the validity of the remainder of this bylaw.

4. REPEAL

The following bylaws are hereby repealed in their entirety:

- a) Bylaw 464, 1986 cited as "The Corporation of the Village of Harrison Hot Springs Rezoning, Amendments to Land Use Contracts and Amendments to the Official Community Plan Form and Application Fee Bylaw No. 464, 1986" and amendments thereto;

- b) Bylaw 466, 1986 cited as "The Corporation of the Village of Harrison Hot Springs Development Permit and Variance Permit Application Fee Bylaw No. 466, 1986" and amendments thereto;
- c) Bylaw 715, 1998 cited as "Board of Variance Application Fee Bylaw No. 715, 1998";
- d) Bylaw 940, 2010 cited as "Fee Schedule Bylaw No. 940"; and
- e) Bylaw 1024, 2012 cited as "Miscellaneous Fee Bylaw No. 1024, 2012".

READINGS AND ADOPTION

READ A FIRST TIME THIS 20th DAY OF JANUARY, 2014

READ A SECOND TIME THIS 20th DAY OF JANUARY, 2014

READ A THIRD TIME THIS 20th DAY OF JANUARY, 2014

ADOPTED THIS DAY OF JANUARY, 2014

Mayor

Corporate Officer

**BYLAW NO. 1049
SCHEDULE "A"**

DEVELOPMENT APPLICATIONS, PERMITS AND FEES

1. Official Community Plan	
(a) Application to amend the Official Community Plan	\$1,000.00
(b) Application to amend the text of the Official Community Plan	\$ 750.00
2. Zoning Bylaw	
(a) Application to amend the Zoning Bylaw	\$1,500.00
(b) Application to amend the text of the Zoning Bylaw	\$1,000.00
3. Development Permit	
(a) Application for issuance of a Development Permit	\$1,000.00
(b) Application to amend a Development Permit	\$ 350.00
4. Development Variance Permit	
(a) Application for issuance of a Development Variance Permit	\$ 750.00
(b) Application to amend a Development Variance Permit	\$ 250.00
5. Board of Variance	
(a) Application to the Board of Variance	\$ 500.00
6. Subdivision Application Fees	
(a) Application for a Subdivision with 3 lots or less	\$ 750.00
(b) For each additional parcel	\$ 50.00
(c) Administration and inspection fees	4% on first \$300,000 and 2% on remainder
7. Temporary Use Permit	
(a) Application for issuance of a Temporary Use Permit	\$ 500.00
(b) Application to renew Temporary Use Permit	\$ 300.00

**BYLAW NO. 1049
SCHEDULE "B"**

PUBLIC WORKS SERVICE AND FEES

- 1. **Labour** As per the current CUPE Local 458 hourly rate
Plus 50% overhead

- 2. **Equipment**
 - Backhoe \$ 45.00/hour
 - John Deere \$ 22.00/hour
 - Pickup truck \$ 9.00/hour
 - Dump Truck \$ 35.00/hour
 - Kubota \$ 17.00/hour

**BYLAW NO. 1049
SCHEDULE "C"**

OFFICE ADMINISTRATION AND MISCELLANEOUS FEES

1. Copies

(a) Photocopies

Black and white	\$.30 per page
Colour	\$1.00 per page
Laminating	add \$1.00
Plans	\$ 6.00
Audio CD	\$10.00
Official Community Plan	\$75.00
Zoning Bylaw	\$50.00
Subdivision Bylaw	\$50.00
Building Regulation Bylaw	\$50.00
Design Guidelines	\$25.00
Offsite legal plans/blueprints	Actual cost plus 15%

2. Tax Certificates

\$25.00

3. Other

(a) NSF Cheque Charge	\$25.00
(b) Oaths and Affidavits	\$20.00
(c) For obtaining property title search from Land Title Office	Actual cost

4. Communal Campground Fire Permit

\$100.00

**BYLAW NO. 1049
SCHEDULE "D"**

PUBLIC PROPERTY OR FACILITY FOR EVENTS, FUNCTIONS OR ACTIVITIES

Public Property

- | | | |
|----|-----------------------------|----------------------|
| 1. | Event Application Fee | |
| | (a) up to 100 people | \$ 100.00 |
| | (b) more than 100 people | \$ 500.00 |
| 2. | Damage Deposit | |
| | (a) up to 100 people | \$ 500.00 (maximum) |
| | (b) more than 100 up to 500 | \$2,000.00 (maximum) |
| | (c) greater than 500 | \$2,500.00 (maximum) |
| 3. | Liability Insurance Policy | |
| | (a) up to 100 people | \$2,000,000.00 |
| | (b) more than 100 people | \$5,000,000.00 |

Memorial Hall Damage Deposit & User Fee

- | | | |
|----|---|---|
| 1. | Festival of the Arts | \$100.00/yr + \$25/use for revenue
Generating events plus applicable taxes |
| 2. | Community groups – frequent users | \$100.00/yr +25 use for revenue
Generating events plus applicable taxes |
| 3. | Private Rentals – Resident and Business Owners
(non-commercial events) | \$400.00 per day
(8:00 a.m. to 2:00 a.m.) or
\$ 50.00 per hour plus applicable
taxes |
| 4. | Private Rentals – Non-Resident | \$750.00 per day
(8:00 a.m. to 2:00 a.m.) or
\$ 90.00 per hour plus applicable
taxes |
| 5. | Damage Deposit | up to a maximum of \$500.00 |